

HAKOL

הקול

THE VOICE OF TEMPLE ISRAEL MINNEAPOLIS



January - February 2020
Tevet - Sh'vat - Adar 5780



TEMPLE ISRAEL
MINNEAPOLIS

Rabbis
Marcia A. Zimmerman
Alvin & June Perlman Senior Rabbinic Chair
Sim Glaser
Jennifer S. G. Hartman
Tobias Divack Moss

Cantor
Barry Abelson
Director of Lifelong Learning
Rabbi Jason Klein

COO/CFO
Anne Rasmussen
BOARD OF DIRECTORS

President
Jed Stillman
Vice Presidents
Michael Gelfman
Jerrold Gershon

Treasurer
Shani Graber
Immediate Past President
Tom Hoffman

Cassie Benowitz
Louis Berezovsky
Beth Birke
Paul Gendler
Robert Ketrosier
Jessica Kingston
Steve Liss
Naomi Pesky
Melissa Rappaport Schiffman
Robin Schribman
Zoe Stern
Anthony Sussman
Allison Wolf

CLERGY VOICE

Dear Friends,

There is an African story about a man who has the same dream each night. In it, a ladder connects heaven to earth, allowing people to travel back and forth. One night he wakes up and the dream has come to life! He takes the hand of a woman on the ladder and asks her to stay. She agrees under one condition: the basket she holds must never be opened, and the man must never look inside. The man agrees, and they begin a life together.

One day, the woman leaves the house and basket behind. The man's curiosity gets the best of him. He opens the basket—and sees nothing. When the woman returns home, she knows. She takes the basket and leaves. The man chases after her, begging her to stay, and she says, "I am not leaving because you looked in the basket. I'm leaving because you saw nothing."

Seeing what's in the baskets of those around us—diverse histories, experiences, and worldviews—is an essential ingredient in a strong and diverse community. Jews of color have been a part of the Jewish community beginning with Abraham and Sarah. Our ancestors dwelled in Mesopotamia and journeyed to Canaan (the Middle East, today), where people have varying hues of brown skin. So why, when someone with brown or black skin comes into our synagogue today, do we treat them like guests, or even with suspicion?

Several Jews of color have been singled out at Temple—asked by well-meaning people if they were here as a guest for the day's Bat Mitzvah or as part of a tour group—when they are here for the same reasons all of us are at Temple: to honor a parent's Yahrzeit, to attend a class, or to pray on Shabbat. Some have been members of Temple Israel all of their lives, but, I've been told, sometimes feel treated like a stranger in their own home.

The majority of Jews in North America are from white Ashkenazi heritage; approximately 20% of Jews are people of color. We have forgotten the

rich history of our communities beyond Europe. Jews from Iraq, Ethiopia, India, China, Morocco—all have rich and varied Jewish traditions, foods, and practices for us to learn about and celebrate. In

addition, Jews of diverse backgrounds are joining the community through conversion and marriage. When you walk into our classrooms, the children we are raising together reflect more and more the many hues of skin color G-d created.

In recent years, many at Temple have wrestled with race and racism. We have had courageous conversations led by Pastor Danny Givens; we have had trainings for staff and leadership around cultural competency; recently, we hosted a lunch and learn that board member Jessi Kingston and I led about the diversity of the Jewish community. We are learning, and we must continue to learn.

February is Black History Month, a time we will use to pay special attention to many voices on race, racism, and the intersection of racism and anti-Semitism. Jews of color are asking many important questions for a strong and vibrant Jewish future. Please join us in exploring together, as the more we are able to talk about race and racism, the stronger we will be as a community, the more relevant we will be in the future, and the more we can celebrate our beautiful and diverse community.

B'virkat Shalom,



Rabbi Marcia A. Zimmerman
Alvin & June Perlman Senior Rabbinic Chair

To learn more, I encourage you to spend some time on Be'chol Lashon's website: GlobalJews.org



RABBI ZIMMERMAN



INSIDE:

Clergy Voice	2
Daily & Shabbat Worship	3
January - February	3-5
B'nai Mitzvah	6
Meet Temple's Staff	7
Torah Hotdish	8
Who Can Leave a Legacy	8
Mind the Gap	8
VOICES: Ideas of Our Time	9
Supporting Jewish Education	9
Sustainability Now	10
Social Justice	10
Men's Club	10
Talmud Today	11
Call for Nominations	12
Contributions	12, 14-15
Sharing Our Lives	13



DAILY & SHABBAT WORSHIP

Look below and to the following pages for more information on upcoming special services and events.

DAILY WORSHIP

Saturday – Thursday at 6:00 p.m.

Daily services are volunteer-led, 20-minute services that are of particular meaning to those saying Kaddish in memory of a loved one.

EREV SHABBAT WORSHIP

Fridays at 6:00 p.m.

First, Fourth, and Fifth Fridays – Erev Shabbat Service

Our Erev Shabbat service features Shabbat readings and prayers along with meaningful musical accompaniment.

Second Friday – Shorashim Shabbat Service

The Shorashim (“roots” in Hebrew) experience is a mindful journey of spiritual connection that will allow us to better understand what is in our hearts as individuals and what makes us a unified community. We will guide you through the music that surrounds us as well as the beauty of silence.

Third Friday – Nefesh Shabbat Service

Nefesh Shabbat, meaning “Soul of Shabbat,” is a musical service featuring multiple vocalists as well as a rotating cast of instruments to bring the most out of our music. It is loved by adults and children of all ages.

SHABBAT MORNING WORSHIP

Saturdays at 9:00 a.m.

Shabbat Morning Service is combined with Torah Study when there are no B’nai Mitzvah ceremonies.

January 4, February 1, February 15, February 22.

Saturdays at 10:30 a.m.

Shabbat Morning Service including B’nai Mitzvah ceremony. See page 8 for upcoming B’nai Mitzvah.

January 11, January 18, January 25 (Scholar-in-Residence Rabbi Salkin, see page 4), February 8, February 29

TOT SHABBAT

First Fridays at 6:00 p.m. September – May

Second Saturdays at 9:30 a.m. September – May

Plus: PJ Library Tot Havdalah February 1 (see page 5)

Calling all families with young children: we invite you to tap into the age-old wisdom of Shabbat with your family as we sing, pray, and connect with one another. There will be food, of course!

TORAH STUDY

Every Saturday, 9:00 – 10:15 a.m.

Join in an instructive and spirited discussion of the week’s Torah portion led by our rabbis and guest teachers. Gain a better understanding of Torah and its relevance to contemporary life through study and dialogue in community.

JANUARY – FEBRUARY

The Temple Israel offices will be closed on **Wednesday, January 1**, for the observance of the federal holiday of New Year’s Day, and on **Monday, January 20** in observance of Martin Luther King, Jr. Day. The 6:00 p.m. daily services will take place as usual. If you have a pastoral emergency and need to reach a member of our clergy, please call our answering service at 952-988-5787.

Highlights in Jewish History with Dr. Joseph Goldman

Never Ending War, Never Ending Peace, Part Two: The Palestinian “Catch 67”

Saturday, January 18, 10:30 a.m.

Join us in a discussion on the “Israeli question” from the Palestinian perspective. Either perpetual war or a binational country: which one do the Jews want? Dr. Goldman is a retired senior lecturer at the Carlson School of Management and lectures regularly at Temple Israel.

God Café: Talking About God as Adults

Sunday, January 19, 9:15 a.m.

Ever feel like in Jewish spaces God is mentioned frequently in our texts yet not often discussed in conversation? Join rabbinical student Sarah Brammer-Shlay for a God Café exploring how Jews today might connect with and explore the Divine, and what it means for each of us personally.



SARAH BRAMMER-SHLAY

JANUARY – FEBRUARY

Sisterhood Mah Jongg

Sundays, January 19 and 26, February 2 and 23, March 1, 10:00 a.m.

Get out of the house this winter and join us for some mahj! Sisterhood will be holding various mah jongg dates at Temple this winter for those who are interested in some gaming fun. Free and open to all.

Support Sisterhood When Buying Your 2020 Mah Jongg Cards

Deadline: Friday, January 24

Cards are \$8.00 (standard size) or \$9.00 (large print). To order, send a check made payable to Sisterhood by Friday, January 24 to: Carole Garrigos, 3301 Flag Avenue South, Minneapolis, MN 55426. Include your name, address, and the type and number of cards that you want. Cards will be shipped before April 1.

Families with Young Children at TEKO

Monday, January 20, 10:00 a.m. – 12:00 noon

Have Martin Luther King, Jr. Day off with your children ages 0–7 and want to gather with other families? Join us at TEKO! We'll have outdoor fun, learn a bit about the Jewish connection to Dr. King, and, of course, enjoy some nosh—together! Contact Rabbi Hartman with questions at jhartman@templeisrael.com.

20s/30s Shabbat Dinner with Rabbi Moss

Friday, January 24 and Friday, February 28, 7:15 p.m.

After Friday night services, join Rabbi Moss for a fun gathering with your peers! If you are interested, please visit www.templeisrael.com/20s30s to sign up for details about upcoming events.

Torah Study with Guest Speaker Eric Ward

Saturday, February 1, 9:00 a.m.

A national expert on the relationship between hate violence and preserving democratic institutions, governance, and inclusive societies, Eric Ward brings nearly 30 years of expertise in community organizing and philanthropy to his role as Western States Center's Executive Director. Since the late 1980s, Eric has worked with community groups, government and business leaders, and human rights advocates throughout the country to expose and counter white nationalist hate groups, protect vulnerable communities, and make our democracy more inclusive.



ERIC WARD

SCHOLAR-IN-RESIDENCE: RABBI JEFFREY SALKIN

With his award-winning blog, “Martini Judaism: For Those Who Want to be Shaken and Stirred,” Rabbi Jeffrey Salkin is one of American Judaism’s thought leaders. Author of *Putting God on the Guest List* and the *JPS B’nai Mitzvah Torah Commentary*, Rabbi Salkin is known for his writing, teaching, and activism. He has authored books on such subjects as making Jewish ritual meaningful, interpreting Israel and Zionism to Jews and non-Jews, and the task of reclaiming Judaism’s central role as a speak-truth-to-power-and-culture religious tradition. His essays have appeared in outlets including the *Washington Post* and *The Huffington Post*, and he has discussed the American political scene on CNN and the BBC. Several of his books have won national awards. Rabbi Salkin serves as the senior rabbi of Temple Solel in Hollywood, Florida.



RABBI JEFFREY SALKIN

Friday, January 24

5:15 p.m. Oneg Shabbat Reception

6:00 p.m. Erev Shabbat Service

Why Kaddish Matters – More Than You Think

What does it really mean? How does it actually repair the world?

Saturday, January 25

9:00 a.m. Torah Study with our JEWL B’nai Mitzvah Families

Rabbi Jeffrey Salkin will lead an intergenerational discussion of the week’s Torah portion: Va-eira, Exodus 6:2–9:35.

10:30 a.m. Shabbat Service Modeling B’nai Mitzvah Experience

With JEWL B’nai Mitzvah families. Followed by a Kiddush luncheon. All are welcome.

Sunday, January 26

9:15 a.m. Brunch and Learn with Rabbi Salkin

The Z Word: Israel Without Apology

What is it about Israel and Zionism that is so troublesome, to so many people? Israel was supposed to be the great Jewish unifier. Why is it the source of so much discord within the American Jewish community? A candid conversation about the many narratives that comprise the Israel conversation today.

JANUARY – FEBRUARY

PJ Library Tot Havdalah

Saturday, February 1, 5:00 - 6:30 p.m.

Havdalah, or separation in Hebrew, is Shabbat's multi-sensory closing ritual traditionally performed when three stars appear on Saturday evening. Join together with other families with young children as we sing and tell stories and do some fun crafts. We will then say goodbye to Shabbat with a musical service, followed by a child-friendly nosh. Fun for all generations!

Erev Shabbat Service with Guest Speaker The Rev. Albert Gallmon Jr.

Friday, February 7, 6:00 p.m.

The Reverend Albert Gallmon, Jr. is the Senior Pastor at Fellowship Missionary Baptist Church. He has served on numerous boards including the Council on Crime and Justice, and has held roles such as Chaplain for the Minnesota State Senate and President of the Minneapolis Chapter of the NAACP. Along with Rabbi Zimmerman, he is a member of the Downtown Clergy Group in Minneapolis, which works to foster a robust interfaith community and promote social justice.



REV. GALLMON

Tot Shabbat, Camp TEKO Style

Friday, February 7, 6:00 p.m. at Temple Israel

Join our Camp TEKO staff for a camp-themed Tot Shabbat at Temple with songs and crafts! Bring your favorite camp stories and learn all about Temple Israel's Camp TEKO. A family-friendly meal follows the service. We can't wait to see you!

Sisterhood Game Day

Sunday, February 9, 12:45 - 4:00 p.m.

Cost is \$20 for food and games (mah jongg and canasta). Lessons on mah jongg will be available; for canasta, please bring a group of four to play. Raffle tickets and prizes will be available. Watch your email for more details!

Tu BiSh'vat:

The New Year for the Trees

Sunday evening, February 9 =

Monday, February 10

**Follow Temple's website,
Facebook, and Instagram for
Tu BiSh'vat resources and fun!**

Erev Shabbat Service with Guest Speaker TJay Middlebrook

Friday, February 21, 6:00 p.m.

To celebrate Jewish Disability Awareness, Acceptance, and Inclusion month, Temple member TJay Middlebrook will speak during services. Growing up, TJay, who is deaf, attended schools for deaf students as well as mainstream schools with the aid of an interpreter, giving him a breadth of perspective on accessibility and inclusion from a young age. His experiences and interests have shaped him into an advocate for those seeking accessibility. In his current role as the ADA (Americans with Disabilities Act) Coordinator for St. Paul, TJay helps ensure that the city's programs and services are accessible to people with disabilities to provide access for all.



TJAY MIDDLEBROOK

Kabbalah Sparks with Rabbi Glaser

Tuesday, February 25, 7:00 p.m.

Explore the four worlds, the related four levels of soul, and ideas of death and transmigration of the soul. Where does the soul reside following this earthly journey? The fruits of Tu BiSh'vat, with their different types of peels, pits, and seeds, represent the worlds' increasing availability to the senses. Recommended reading: Chapter 19 in *A Kabbalah and Jewish Mysticism Reader*. For more, contact Wendy at 612-374-0344.

Purim Celebrations - Save the Date!

Sunday, March 8

Purim Spiel in the Sanctuary

Purim Carnival, including sensory-friendly space

Erev Purim

Monday, March 9

JEWL Purim Celebration

Purim Service, including family Megillah reading

Stay tuned for more Purim festivities.

WZO Register to Vote

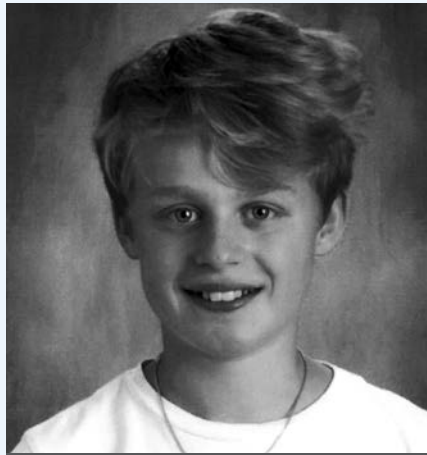
Voting is January 21 - March 11

The World Zionist Congress Elections are coming soon, and your vote is critical to maintaining a large Reform presence in Israel and the United States! This is your opportunity to influence Israeli society as we continue our efforts towards equality, pluralism, and tolerance. To learn more, visit ARZA.org.



Rachel Fisher
January 11, 2020

Vayechi Rachel is the daughter of Debbie Hahn Fisher & Jeremy Fisher, sister of Hazel, and granddaughter of Natalie & Morris Fisher. Rachel enjoys figure skating, drawing, helping neighbors with yard/house work, and serving meals to those in need. She also enjoys Chanukah. At Hopkins North Junior High, her favorite subjects are U.S. studies, science, and math. She would like to be a therapist, politician, engineer, or doctor. When asked about her Bat Mitzvah, she said, **“I’m excited to be a Jewish adult, and to celebrate with my family and friends!”**



Henry William Paton
January 18, 2020

Sh'mot Henry is the son of Kerry Roth Paton & Bradley Sorock and Michael Paton & Kate Grussing; brother of Charlie; and grandson of Ann B. & William R. Roth²¹, Mary Paton, Jean & Bruce Grussing, and Pamala & Bob Sorock. Henry enjoys soccer, being with friends, cross-country skiing, and travel. He also enjoys Passover. At Lake Harriet Community School, his favorite subjects are gym, science, and history. He would like to play in the Premier League and be a sports announcer. When asked about his Bar Mitzvah, he said, **“I am excited to celebrate with my friends and family!”**



Liam Michael Weinstine
January 18, 2020

Sh'mot Liam is the son of Darcy Shields and Tony & Holly Weinstine; brother of Stella and Josh, and grandson of Kathy & Pat Shields, Judy Weinstine, Barb & Bob Weinstine, and Nick Arenaz. Liam enjoys soccer, snowboarding, basketball, skateboarding, and volunteering at Loaves & Fishes. He also enjoys making challah and learning Hebrew songs. At Nova Classical Academy, his favorite subjects are math and Latin. He would like to be a soccer player, doctor, or astronaut. When asked about his Bar Mitzvah, he said, **“I can’t wait to share this moment with family and friends!”**



Isaac Bell
February 8, 2020

B'shalach Isaac is the son of Erin & Randy Bell; brother of Samuel; and grandson of Carolyn & Edwin Bell and Denise & John Lynch. Isaac enjoys mountain biking, fishing, reading, skiing, and helping at Free Bikes for Kids. He also enjoys spending Shabbat with his family. At Southview Middle School, his favorite subject is math. When he grows up, Isaac wants to be happy—and still able to ride bikes! When asked about his Bar Mitzvah, he said, **“I am really looking forward to sharing my Torah portion with everyone and spending time with my family and friends.”**



Georgia LaMere
February 29, 2020

Terumah Georgia is the daughter of Melanie & Andre LaMere; sister of Josie; and granddaughter of Pam Margolis, Mark Margolis, and Susan & Guy LaMere. Georgia enjoys gymnastics, piano, dogs, being with friends, cooking, baking, and volunteering at STEP and My Very Own Bed. She also enjoys attending Camp TEK0 and OSRUI. At Anthony Middle School, her favorite subjects are language arts and choir. She would like to be a cooking instructor and own a bakery or restaurant. When asked about her Bat Mitzvah, she said, **“I’m excited to celebrate with everyone and become a Jewish adult!”**

MEET TEMPLE'S STAFF



If you ask Temple Israel's Receptionist, Alisha Stansil, how she is, she'll likely say, with a smile, "So far, so good!"

Alisha has been with Temple since September. Originally from Gary, Indiana, her family moved to Minneapolis when she was 9. She received her Associate's Degree from Minneapolis Community and Technical

College, and recently worked at US Bank as an ATM Researcher and Fraud Analyst.

A mother of two, Ladeja and Michael, Alisha has a huge heart for family, community, and volunteering. When the Super Bowl was in Minneapolis, she was a "Quarterback," a year-long commitment in which she coordinated dozens of other volunteers. More recently, she volunteered for the Final Four as a

"Point Guard." She's also volunteered with Pride, school supply packing drives, and social services organization The Family Partnership.

Alisha loves to dance, and is part of the soul line dance group We Are Family. The group recently won a local competition—Mazel Tov, Alisha!

Alisha also loves to travel. In 2019 alone, she went to Orlando, Detroit, Philadelphia, New York, Las Vegas, Atlantic City, and back to Gary. She looks forward to doing more international travel—"I wanna hop with the kangaroos in Australia!" she says with a laugh.

When asked about her work at Temple, Alisha says she wanted a position where she could grow: "I'm always looking for ways to improve." She has immersed herself into her work, building relationships and learning about Judaism.

WELCOME, ALISHA!

TORAH HOTDISH

ADULT AND ELDER LIFELONG LEARNING

At Temple Israel, we actively embrace and promote learning throughout the whole life cycle.

Temple's robust Lifelong Learning department offers programming not just for children and youth, but also for adults of all ages. Our adult learning programs are for those interested in attending classes each week as well as for those who want to come more casually to learn about a single topic.

Our regular drop-in offerings include **Torah Study** each Saturday morning, where our clergy and occasional guest teachers lead an instructive and spirited discussion of the week's Torah portion and its relevance to life today. The **Highlights in Jewish History** series, led by Dr. Joe Goldman, provides a presentation and basis for discussion on a different topic each month. Our **Lunch and Learn** programs have different topics at each session, with speakers such as Temple clergy, members, or special guests.

Kabbalah Sparks with Rabbi Glaser has a curriculum that runs two years to cover many subject areas as participants read their way through Daniel Horowitz's book *A Kabbalah and Jewish Mysticism Reader*. Each class also stands on its own. Our

Mussar Groups are short-term commitments where facilitators lead small groups in learning how to respond to the world in ways that help bring about greater peace, compassion, and joy.

On Tuesday evenings, adults are learning Hebrew and being introduced to Jewish history, culture, texts, and traditions through Temple's **Adult Hebrew Classes** or **Introduction to Judaism**. Many who have not celebrated becoming B'nai Mitzvah may elect to do so through our **Anshei Mitzvah** program with an instructor and cohort of peers looking to celebrate this milestone.

In addition to these regular offerings, Temple often hosts timely programs featuring renowned experts, interfaith speakers, and community leaders. And, of course, each Shabbat service includes teachings that offer Jewish wisdom as a response to, comfort for, and lens through which we may view today's issues.

At many hours of the day, Temple's lights are on as groups of people join to learn together, and we hope you will join us! For more, visit www.templeisrael.com or call Wendy Schwartz at 612-374-0344.

WHO CAN LEAVE A LEGACY?



SHIRI COOKS

Shiri Cooks is a familiar presence here at Temple. A valued member of our education team for nearly 18 years, Shiri teaches and creates programs for both children and adults, and is a lead teacher in our Early Childhood Center.

Her roots here at Temple, however, go back even further. Shiri was ten years old when her family moved to Minneapolis from Israel, and many members of Temple helped them integrate into their new community.

“My family always felt love and support from Temple Israel,” Shiri says. “In 2002, when I saw that Temple was hiring for a preschool teacher, I wanted to work here immediately. Ever since then, I have felt like I’m part of a family. I love working here. I smile just thinking about the children I teach. They always make me laugh, and they are full of unconditional love. It is a privilege to share my love of Judaism every day.”

A FAMILY TRAGEDY

“This community has always been an incredible part of my life, but never more so than after the death of my father,” Shiri continued. “He was killed in a workplace shooting in 2012. Temple did everything. In 20 minutes, they found burial plots. Temple sent a Shabbat dinner to my family. The clergy were present at the funeral, and every single night of the *shiva*. Parents of children I used to teach came to support us. Kids from the religious school made me a blanket, signed with over 200 messages of love. I still

have it. Every year, at Yom Kippur, I see my father's name in the *Yizkor* book, and I know that the community has not forgotten him. It means so much to me.”

LEAVING A LEGACY

“I have always wanted to thank Temple for the incredible blessings and support I have received over the years. Even though I didn’t have a lot to give, I decided to visit the Advancement Office to talk about what I could do. It was suggested that I could leave a legacy gift. I admit, I was sure that legacy gifts were only for millionaires, or for people much older than me! But I came to realize that the amount is not important. It is being a part of something meaningful. **It is about the act of giving back.** It is about being able to leave my mark, my legacy, on something that is so important to me.”

Her advice? “Just think about it!” Shiri urges. “Whether you are young or old, whether you are Jewish or not, think about leaving a little to Temple. **Temple gives so much to you—to all of us. It is only right that we take care of Temple by giving back.**”

Today, Temple Israel’s endowment stands at \$13 million, generating approximately \$500,000 annually in revenue to support Temple operations.

If every member participated in legacy giving since our endowment was established in 1969, leaving a bequest of just \$1,000, our endowment would be nearly \$40 million, generating \$1.8 million every year for Temple. **YOUR** participation makes a difference. Contact Rachel Schachter, Director of Advancement, at rschachter@templeisrael.com or 612-374-0302.

MIND THE GAP

ANNUAL FUND FOR TEMPLE ISRAEL

Your gifts to the **Annual Fund for Temple Israel** make a difference. Your gifts help bridge the gap between what annual membership dues cover and our actual annual operating costs—**thank you!**

The **Annual Fund for Temple Israel** allows us to meet the needs of our diverse congregation by funding our interfaith work, social justice initiatives and outreach, Jewish learning and scholarships, and so much more. The **Annual Fund for Temple Israel** helps shape and sustain the Temple Israel that matters most to you.

Your gift of any size helps us to **mind the gap** and ensures that we can continue inspiring, educating, connecting and invigorating our community this year and next. All donations are tax deductible.

Contact Rachel Schachter, Director of Advancement, at rschachter@templeisrael.com or 612-374-0302 with any questions.

TEMPLE
ISRAEL

VOICES

IDEAS OF OUR TIME

SAVE THE DATE

MAY 14, 2020

CHEF YOTAM OTTOLENGHI



THE OREN & SHARRON STEINFELDT FOUNDATION

SUPPORTING JEWISH EDUCATION

We are grateful to the Oren & Sharron Steinfeldt Foundation for continuing to support Jewish learning here at Temple Israel. Through a generous grant of \$20,000, the Oren & Sharron Steinfeldt Foundation provides funding for our JEWL (Jewish Experiential Whole-Person Learning) K-12 program.

The grant jointly supports scholarships for families in need of tuition assistance, as well as overall support for the JEWL program, including curriculum development, professional development for faculty and staff, and more.

Like all synagogue religious schools, income from tuition does not cover all of the fees necessary to operate our school—it covers only 65% of operating costs. The remaining 35% is covered

by generous grants from funders like the Oren & Sharron Steinfeldt Family Foundation and the Minneapolis Jewish Federation. Additional support comes from our congregants, through the Annual Fund for Temple Israel, and endowment funds for Jewish learning. Providing every child with a Jewish education is one of our highest priorities, and no family is ever turned away from JEWL because of an inability to pay.

“The Steinfeldt family has always been an incredible supporter of Temple Israel,” says Senior Rabbi, Marcia Zimmerman. “When our next generation receives the gift of Jewish learning, our entire community benefits.”

SUSTAINABILITY NOW

NET ZERO CARBON EMISSIONS: IS IT POSSIBLE?

One year ago, the Board of Directors approved an ambitious sustainability goal as part of its strategic plan: Net Zero Carbon Emissions by 2030. To achieve net zero emissions, we need to understand Temple's current carbon emissions, which are primarily caused by the energy used to heat, cool, ventilate, light, and power the building. The majority of this energy comes from burning fossil fuels: coal and natural gas.

It may seem complicated, but it's just two components: Temple's use of electricity and natural gas. Over the past year, Temple used about 750,000 kilowatt-hours (kWh) and 49,000 therms of natural gas for its Emerson campus. These figures can be translated directly into carbon emissions using an online calculator managed by the Environmental Protection Agency.

Temple's annual energy usage equates to about 790,000 kilograms per year. How do we get that number to zero by 2030? While our Sustainability Task Force is working on a plan, we've already gained traction on the first step: energy efficiency. In 2019, Temple undertook a Commissioning Study—an analysis, partially funded by utilities, to help find no- and low-cost savings on its gas and electric bills. Thanks to this study, Temple has already implemented

many energy-saving measures that reduce Temple's carbon emissions by approximately 57,000 kilograms per year.

What else can we do? On the electricity side (comprising 67 percent of the emissions), we have options. Xcel Energy is already committed to being 80 percent carbon-free by 2030 and 100 percent carbon-free by 2050. To speed up the pace, Temple is looking into renewable energy directly through Xcel. Another option is to consider adding more solar panels on the roof of the sanctuary.

On the gas side, options include phasing out gas-powered appliances over time in favor of electric-powered equipment. We may also consider offsetting emissions with additional tree planting or carbon sequestration projects.

By setting aspirational goals and making a plan to get there, Temple is living and demonstrating its values. We hope to educate and engage with our community as we move along this path toward sustainability. If you would like to learn more or contribute your ideas, please contact Temple member Brian Zakem at BZakem@comcast.net.

By Melissa Rappaport Schifman, Board Member

SOCIAL JUSTICE

Our Social Justice Task Force is publishing an ongoing list of opportunities you may be moved to pursue, working alongside fellow Temple congregants and bringing tikkun (repair) to a broken world.

THE LINK

The Link works with youth and young families who may be experiencing homelessness, who are in juvenile justice programs, or who have been exploited. Volunteers are needed to stock and organize closets, prep frozen meals, pack care kits, do yard clean up, and more. If you are interested in helping, please contact Dean Goldberg at dgoldberg620@gmail.com.

JEFFERSON SCHOOL

Jefferson's Media Center needs assistance re-shelving books and help with checking out, the arts class is looking for aides, and the after school classes need adults who would be interested in teaching a special skill once a week. Volunteers can also assist with other classes. Contact Roger Conhaim at 612-374-9454.

MEN'S CLUB

Interested in supporting Temple and our surrounding community in 2020? Some of the activities that Men's Club will be doing in 2020 are two Camp TEKO picnics, cooking and serving breakfasts at St. Stephen's Shelter, providing meals for Families Moving Forward, Sukkah decorating, assisting with Temple events, and more!

Our members attend as many or as few programs as they wish. Some plan and staff our functions. Many support us with a financial contribution. No matter how you participate, your support of our programs is needed!

Men's Club 2020 annual membership forms are available by emailing either of your co-presidents:

Jed Marquisee: jmarquisee@aol.com

Mark Ratner: mratner@hotmail.com

Thank you for all of your support in 2019!

TALMUD TODAY

TRACTATE TI 5A

RABBI GLASER SAYS

We consistently alternate between positions of judgment and feelings of compassion for our fellow global inhabitants. When we find our sentiments about others' behaviors to be excessively harsh, it is important to remember that they, like us, are toughing it out through life. We should not separate ourselves from the human community. Nobody has an unburnished existence. Everyone has successes and trials, highs and lows. We can make another person's journey through this life sweeter by celebrating our unity with them, and considering their humanity and their pain before we judge. They, in turn, may well do the same for us.

RABBI MOSS SAYS

When we are in a foreign place or outside of our comfort zone, we all behave differently and sometimes our virtues don't manifest as clearly. Therefore, Menachem Meiri, a 13th century scholar from Southern France, has a creative understanding regarding judging another **in their place**. He says that we can't judge a person's character until we've seen how they behave in their home city, on their home turf, "in their place." (adapted from Dr. Joshua Kulp's Mishnah commentary)



Hillel said:

Do not separate yourself from the community [...]

Do not judge your fellow until you are in their place.

RABBI HARTMAN SAYS

Being part of a community is filled with blessings - and with challenges. When a community is in agreement, things are simple, and people live together harmoniously. When we disagree, are pushed to look at the world differently, or are asked to shift our paradigms, we might wish to run away or separate ourselves from the community. These challenging times, in fact, are the times when the community is the biggest blessing for its members. At these times, the community helps us to grow as we wrestle with our ideas and try to understand the perspective of others. We, in return, are able to give our shaped knowledge and compassion back to the community in a cycle that makes us all stronger and more vibrant.

RABBI KLEIN SAYS

Eight years ago I traveled to West Africa with American Jewish World Service (AJWS) to learn about child slavery in Ghana. As 16 rabbis trickled into JFK's departure lounge, some of us started to bashfully confess that, though the airline had seated us as a group, we had requested a seat change to be in an aisle or window seat. Using Hillel's word **תפרוש** **tifrosh** for "separate yourself," we quipped that we had "tifroshed" from the group, a joke that may have persisted over the next week or two when one of us needed a moment to catch our breath during this intense trip. Yet, each of us was also thankful to have a group of close colleagues with whom we could learn, build, cry, laugh, sing, and pray. Even though I turned down the opportunity to sit in a Boeing 767's middle seat, I was grateful to be in the middle seat when it really mattered, in a tightly knit community of fellow travelers, learners, witnesses, and new friends.

CALL FOR NOMINATIONS

LOUIS GAINSLEY DISTINGUISHED SERVICE AWARD

The Louis Gainsley Distinguished Service Award recognizes the outstanding volunteer efforts of Temple Israel members who have contributed significantly both to Temple and to the community. The award is an expression of appreciation for those who, over a ten-year period or longer, have personified Jewish values through their volunteerism and commitment to lifelong learning, meaningful worship, and active participation in Temple and the community.

To nominate an individual or couple, please send the name(s) of the nominee, a description of your reasons for nominating along with your name and phone number to Liz Mack at nominations@templeisrael.com or call 612-374-0318. Nominations due no later than March 15.



TEMPLE ISRAEL BOARD OF DIRECTORS

The Nominating Committee of Temple Israel's Board of Directors is assembling a slate of candidates for directors and officers for election at the Annual Meeting in June. You may nominate yourself or other members of the congregation. We seek candidates who think outside the matzah box; people who not only don't paint between the lines, but don't even stay on the canvas. We are interested in committed individuals who can design and build Temple's future, and help our congregation thrive and lead the way for Reform Judaism.

Download and complete the Board nomination form available on our website www.templeisrael.com. Send the completed form to Tom Hoffman, Nominating Committee Chair, at nominations@templeisrael.com no later than Friday, February 14.



2019-2020 BOARD OF DIRECTORS

CONTRIBUTIONS

YAHARZEIT FUND

Carolyn Ackerberg
Lorraine Applebaum
Arlene Badiner
Shari Baldinger-Douglas & Bruce Douglas
Harvey Bass
Susan & Andrew Baumel
Gary Berkovitz
Toby & Frank Berman
Bonnie & David Blumberg
Judith Brill
Marilyn Chiat
Beth & Peter Choukalas
Diane Coplan Donohue & Michael Donohue

Ann & Neil Covin
Judy Daniels
Diane Dempsey
Lisa Dill
Mary Dworsky
Dora & Isaac Einisman
Jeffrey Eisenberg
Patti & Lee Engler
Richard Esensten
Lil & Max Fallek
Joan Feinberg
Cheryl & Mark Feinberg
Elizabeth & Charles Feldbaum
Gerry & Sheldon Feldman
Linda & Leslie Fieldman
Harvey Filister & Ted Bair

Muriel Frederick
Pauline Gale
Carole & Ignacio Garrigos
Karen & Bruce Gershman
Mimi Gleekel
Nella & Mark Goldburt
Herb Goldenberg
Bruce Goodman
Susan & Rand Gottlieb
Shani & Sam Graber
Myra & Roger Greenberg
Thomas Halpern
Barbara & Ronald Harris
Sid Hartman
Doris Hodroff
Kristine Hoover

Gerri Joseph
Rosann Kahner
Liliya Kalman
Jill & Lennie Kaufman
Simajeane & Alvin Kaye
Irwin Ketroser
Jane & Robert Ketroser
Christine & John Kitchener
Betty & Larry Kriedberg
Sharlene Ladin
Terry Ladin
Faina & Alex Lakhter
Rochelle Larson
Frances Laven
Irina & Val Levin
Kenneth Levinson

SHARING OUR LIVES

IN MEMORY OF...

Condolences to our Temple families who have recently lost a loved one.

Morton Bank, Father of David (Stephanie) Bank and Michael (Heather) Bank
Marilyn Brown, Aunt of Roberta Brown
Lillian Erickson, Mother of Kris (Steve) Prince
Evelyn Flom, Wife of Harvey Flom, Mother of Bonnie Chazin
Sharon Friedman, Mother of JoEllyn (Brian) Moran
Susan Genis, Mother of Lauren (Michael) Kelner
Merle Sue Green, Sister of Barbara (Steve) Godes
Robert Hallfin, Brother of Larry (Elaine) Hallfin
David Ketrosor, Son of Irwin Ketrosor,
Brother of Robert (Jane) Ketrosor
Lorin Lerner, Sister of Aaron (Debbie) Lerner
Jules Levin, Father of Sue (Steve) Morem
Leonard Levin, Husband of Dorothy Levin,
Father of Faith (Steven) Rothberg
Helen Lutz
Stan Maisel, Father-in-law of L.J. Rotman,
Companion and Partner of Jean Efron
Larry Marofsky, Husband of Myrna Marofsky,
Father of Sarah (Aaron) Keshner and Eve (Lawrence) Raymond
Fred Nathanson, Husband of Suzi Nathanson
James Rench, Father of Jana (Laura) Shortal
Thomas Rothstein, Soulmate of Marni Ribnick
Lorilee Sher, Mother of Rachel Sher and Callie Sher
Darlene Stillpass, Sister of Harvey Filister (Ted Bair)
Bette Lou Woskoff
Jack Zelkin, Father of Wendi (Rick) Rosenstein

JANUARY & FEBRUARY ANNIVERSARIES

55 th	Jackie & Stephen Sinykin	2/19
50 th	Pamela & Timothy Chandler	2/21
45 th	Donis Boss & Jeffrey Kuznia	1/10
45 th	Randi & Alan Birk	2/8
40 th	Julia & Bart Friske	2/13
40 th	Marina Tankilevich & Gennadiy Bakman	2/16
35 th	Karen & Bruce Simon	2/16
25 th	Harvey Filister & Ted Bair	1/13
15 th	Jorie & Robby Malk	1/15
15 th	Marci & Brian Karch	1/22
15 th	Jenni & Corey Friedman	2/5
10 th	Colby & Doug Ujdur	1/16
10 th	Carolyn & Shane Goodman	2/13
5 th	Sonja & Harlan Rossmann	2/14

MAZEL TOV TO...

- Kate & Jon Applebaum on the birth of Margo Pearl, who was born on November 9. Margo was welcomed home by sister Julia Lynn. Grandparents are Jay Applebaum, Robin Johnson, and Dr. David Fischer & Andrea Fischer. Great-grandparents are Lorraine Applebaum and Gloria Johnson.
- Jack El-Hai on the publication of his book, *The Lost Brothers: A Family's Decades-Long Search*. The book is available through the University of Minnesota Press.
- Patty & Lee Engler on the wedding of their daughter Mollie to Adam Sommer. The two were married on September 28.
- Kay & Bruce Goldstein on the birth of grandson Bodie Pierce Goldstein. Bodie's parents are Blaire & Danny Goldstein.
- Miriam & Erwin Kelen on donating their collection, "The Expressionist Figure: The Miriam and Erwin Kelen Collection of Drawings," to the Walker Arts Center. The exhibition is being featured through April 19.
- Ruth Knelman on being featured in a Post Bulletin piece by Harvey Mackay, "Life Lessons from Grandma Ruth."
- Izzy Middlebrook on organizing a community event to assemble kits for those experiencing homelessness. The event was held the day after Thanksgiving; 100 kits were assembled by about 50 people. Izzy's parents are Genna & TJay Middlebrook.
- Bonnie Dudovitz & Jean Quam on the birth of grandson Ezekiel (Zeke) Timothy Dudovitz in September; he joins brother Tavin. Zeke's parents are Jaime Dudovitz & Ellen Smith.
- Anne & Scott Rasmussen on the birth of granddaughter Sophia in October. Sophia is the daughter of Lauren & TJ Freeman and was welcomed home by brother Easton. Anne is Temple Israel's COO/CFO.
- Susan Segal on being appointed to the Minnesota Court of Appeals by Governor Tim Walz.
- Judy & Neal Sher on the birth of granddaughter Olivia Marlowe Anderson in October. Olivia's parents are Cindy Sher & Kurt Anderson.
- Jennifer & Michael Stroik on the birth of Jackson Neal Stroik on August 18, 2019. He was welcomed home by brothers Charles and Parker.

NEW MEMBERS

Carla Andersen	Natalie Levin & Stephen Gilberstadt
GiGi Goodman	Laura Newland Lukens & Cory Lukens
Anissa & Marc Gurstel	Reine & Sam Shiffman
Charles Horowitz	

CONTRIBUTIONS

Yahrzeit Fund continued

Esya & Aron Lunin
Karen & Frederick Malver
Lesle & Herbert Margolis
Candace Mayeron
Connee Mayeron-Cowles & Fuller Cowles
Joyce Moscoe
Charlotte Moses
Candice & Charles Nadler
Leslie Novak
Michele O'Kane & Richard Rosenberg
Adam Olkon
Sandra & Sheldon Olkon
Janna Paley
Ruth & Nathan Paley
Sandra Petersen
Renee & Michael Popkin
Sharon & Michael Posnansky
Suzanne Prass
Ellen Prozumenshikov
Michael Rabin
Roslyn Rubenstein
Wendy & Wayne Salita
Esther Schak
Vicki Schrabner
Judith & Neal Sher
Reine & Sam Shiffman
Stuart Sklar
Hilarie & Norman Stein
Sharron Steinfeldt
Jane Sternberg
Yelizaveta Sumetsky
James Tankenoff
Rhoda Toles
Doris & Jerome Webb
Gail & Richard Weinberg
Pamela Weiner
Janice & Joel Weisberg
Marlene Weitz
Fremajane Wolfson
Kathy Simon Zack & Howard Zack
Sue & Alvin Zelickson

Cantor Barry Abelson Discretionary Fund

Appreciation of Cantor Abelson
Nance Alexander & Stan Eisenberg
Family of Morton Bank
Rhonda, Laura, Jeffrey and Karen Bland
Adele & Curt Brown and Family
Dana, Raul, Celia and Mateo Escobar
Joan Feinberg
Harvey Flom and Family
Leslie Galvan and Family
Robert Hunegs
Jane & Robert Ketroser
Nancie Litin
Family of Larry Marofsky
John Mast
Diane & Alan Miller
Suzanne Nathanson & Family
Hugh Newman
Susan & Gary Rappaport
Shelley Segal
Miriam Seidenfeld
Rhonda Stein & Stuart Goldenberg
Laurie & Greg Swiler
Kimberly Wolson & Norman Abramson
Honor of Susan Wood & Joyce Kenny
Ina & Larry Gravitz

Cantor Abelson Shabbat Music Fund

Memory of Merle Green
Joey & Jerry Laurie
Memory of Stephen Rose
Sharon Stulberg

Annual Fund for Temple Israel

Cathy Bloom
Caren Daniels
Sparky & Thomas Eisenstadt
Serene Engler & Phil Marks
Gerald Freeman
Idy & Allan Garvis
Alison Goldberg
Marlene Goldenberg & Robert Patrick, VI
Susan & Harold Goldstein
Jane & Robert Ketroser
Christine & John Kitchener
Rabbi Jason Klein
Kara & Benjamin Lazarus
Natalie Levin & Stephen Gilberstadt
Lacey Lundstrom
Happi Mahlum
Naomi Marcus
Elizabeth Rose & Richard Jerome
Sarah & Gregory Strong
Linda & Daniel Yesnes
Timothy Zuel & William Sternberg
Lloyd Zimmerman
Anniversary of Evelyn & Alan Ingber
Anniversary of Laurie & Bill Laden
Carrie & Ralph Jacobson
Anniversary of Susan & Robert Rappaport
Joy Leibman
Appreciation of Dana Rubin
Debbie Rich and Eve Miller
Honor of Delores Schmidt
Rabbi Loraine Heller
Memory of Morton Bank
Lorraine Applebaum
Memory of Lois Devitt
Joy Leibman
Memory of Edie Ferber
Sandy Kuntz
Carol & Frederick Zeidler
Memory of Evelyn Flom
Peni & Steven Gensler
Memory of Elaine Lerner
Lorraine Applebaum
Memory of Helen Lutz
Mary Lutz
Memory of Larry Marofsky
Carol & Ronald Sands
Memory of Neil Mogilner
Carol & David Rosenblatt
Memory of Fred Nathanson
Melanie Barry
Memory of Bernard Raphan
Marilyn Rock
Memory of Stephen Rose
Lorraine Applebaum
Joyce Field
Memory of Mark Rosen
Shani & Sam Graber
Memory of Martin Segal
Memory of Thomas Segal
Bonnie & David Blumberg
Memory of Bob Sharpe
Carol & David Rosenblatt
Memory of Maxine Smiley
Catherine Lee

Memory of Darlene Stillpass
Tammy & Carl Birnberg
Barry Garfinkle
Arlene & Zvi Leibovich
Marlene Weitz and Family
Recovery of Larry Braufman
Bonnie & David Blumberg
Recovery of Diane Ingber
Rita & Larry Covin
Recovery of Zvi Leibovich
Kathy & Howard Zack

Bereзовsky Family Special Needs Fund

Birthday of Sharlene Ladin
Jody Beck
Sandra & Julius Bereзовsky

Joanne Blindman Nursery School Scholarship Fund

Memory of Thomas Feinberg
Memory of Evelyn Flom
Memory of Carol Garrison
Memory of Jules Levin
Memory of Mariellen Palm
Memory of Maxine Smiley
Memory of Burton Weisberg
Joanne Blindman

Rabbi S.N. Deinard Memorial Fund

Sue & Amos Deinard

John Dellapenna Fund to End Homelessness

Lil & Max Fallek
Honor of Sophia Stenzler
Elaine & Yale Stenzler

Mischa & Doris Dworsky Outreach Fund

Memory of Doris & Mischa Dworsky
Beth & William Dworsky

Education Endowment Fund

Sheila & Michael Klein
Memory of Helen Lutz
Mary Lutz

Debra Kieffer Eisenberg Fund for Children with Learning Disabilities

Anniversary of Chris & Mick McCambridge
Anniversary of Susan & Robert Rappaport
Memory of Evelyn Flom
Nance Alexander & Stan Eisenberg
Memory of Marshall Kieffer
Susan Tish McMorris & Brian McMorris
Miriam Sanders
Recovery of Elizabeth Ward
Nance Alexander & Stan Eisenberg

Food Shelf Fund

Marjorie Abrams
Betsy & David Abramson
Richard Abramson
Lauren Baker & Eric Black
Gary Berkovitz
Rhoda & Leonard Bernstein
Barbara Berris
Debra & James Bomberg
Karen & Bradley Bream
Judith & William Britt
Elaine Burton
Maria Calvo & Steven Rosenstone
Cheryl Chandler-Rosenblatt & Michael Rosenblatt
Virginia Cherne
Linda & Kenneth Cutler
Bonnie Dudovitz & Jean Quam
Beth & William Dworsky
Robert Edelstein

Lil & Max Fallek
Esther Feldman & Stephen Simon
Linda & Robert Fisher
Meredith & Les Forgosh
Beth & Larry Fox
Rachael Freed
Edwin Freeman
Marlen Frost
Carole & Ira Furman
Maggie Gilbert & Robert Rosenbaum
Nancy & Stuart Gitis
Elizabeth & Anthony Gleekeel
Mimi Gleekeel
Rosalie & Fredric Goldberg
Karen Grabow & Keith Halperin
Sally Grans-Korsh & Ronald Korsh
Ina & Larry Gravitz
Allison Greenwald & Sigurd Ueland
Helene Haapala & Connie Martin
Roslyn Jaffee
Michelle Johnson & Andrew Greengrass
Steve Kalin & Lisa Doty
Irene & Edward Kaplan
Judy Karon
Sydney Kase & Scott Glickstein
Janice & Leonard Kennen
Robert Kent
Julie & Hugh Kirsch
Crickie & Richard Klegon
Marcia Koester
Jane Korn & Robert Madoff
Debora Kornhauser
Linda Kornhauser
Debbie Krovitz & Richard Rice
Mary & Lewis Lampert
Renee & Mark Lampert
Joey & Jerry Laurie
Kenneth Levinson
Helen & Ralph Levitt
Beverly & George Lillquist
Ronna & Richard Locketz
Diane & Jeffrey Lovich
Karen & Frederick Malver
Krista & Jeff Margolis
Elizabeth & Robert Melamed
Nancy Miller-Levin & Ed Levin
Ilene Mojsilov
Candice & Charles Nadler
Sheryl & Steve Newman
Marjorie & Charles Ostrov
Jennifer Pettit & Jonathan Shuster
Nancy & James Proman
Bettimae Richman
Lori Richman & Janet Lund
Daniel Rose
Roslyn Rubenstein
Sally Rubenstein
Amy Sadoff & Richard Launer
Joel Salsberg
Marsha & Joel Seltz
Rachel Seltz
Norah Shapiro & Andrew Harrison
Sally Spector & Alex Makovetsky
Deb & Michael Stein
Angela & Ben Stenzler
Sandy Taler & Andrew Westreich
Helen & Kenneth Tuvman
Elizabeth Ward
Pamela & Daniel Weisdorf
Bonnie & Alan Ziskin
Birthday of Roberta Cohen
Carie & William Rose

CONTRIBUTIONS

This list reflects gifts received through December 3, 2019. Gifts received after that date will be listed in subsequent issues of HaKol.

Honor of Debbie Stillman
Stephanie & David Bank
Memory of Morris Cohen
Memory of Sarah Feinstein
Memory of Alex Freisinger
Karen & Frederick Malver
Memory of Evelyn Flom
James Carroll
Rita Grossman
Memory of Grandmother of
Samantha Goodmanson
Vicki Schrabber
Memory of Mark Rosen
Jane & Todd Lifson
CINDY KUNIN GINSBERG FAMILY ASSISTANCE FUND
Birthdays of Simajean & Alan Kaye
Memory of Morton Bank
Memory of Tom Feinberg
Memory of Elaine Lerner
Beverly & Paul Kunin
RABBI SIM GLASER DISCRETIONARY FUND
Appreciation of Helen & Jim Ehrlich
Saralee Mogilner
Appreciation of Rabbi Glaser
Nance Alexander & Stan Eisenberg
Family of Arnold Aronson
Linda Crawford & Jo Devlin
Dana, Raul, Celia and Mateo Escobar
Sylvia Horwitz & Peter Truran
Betty & Peter Jonas
Brent & Mitzi Magid
Carol Roemhild
Jeff Ross
Susan Seitel
Judith & Neal Sher
Steven Snyder
Carolyn & Richard Young
JUDY & HERB GOLDENBERG SCHOLARSHIP FUND
Appreciation of Herb Goldenberg
Sharon & Stan Chauss and Greg Robinson
EDWIN F. HARRIS PRESIDENTS' FUND
Yahrzeit of Howard Harris
Yahrzeit of Serene Harris
Yahrzeit of David Leff
Yahrzeit of Alvin Perlman
Yahrzeit of Lewis Perlman
Judith & Jon Harris
RABBI JENNIFER S.G. HARTMAN DISCRETIONARY FUND
Appreciation of Rabbi Hartman
Nance Alexander & Stan Eisenberg
Family of Morton Bank
Jennifer & Michael Stroik
Kimberly Wolson & Norman Abramson
Birthday of Bob Hartman
Honor of Emmy Brooke Hartman
Andrea & William Johnstone
Memory of David Ketroser
Margo Berdass
ROSELEE & SIDNEY HASKOVITZ HEALING FUND
Yahrzeit of Ida Bach
Yahrzeit of Fred Ziman
Beth & Mark Saliterman
IMMIGRATION JUSTICE FUND
Aviva Breen
Gordon Brown
Lil & Max Fallek
Barbara & Sim Glaser

Bruce Goodman
Ellen Joseph & Dennis Ready
Sylvia & Samuel Kaplan
Sydney Kase & Scott Glickstein
Sidney Levin
Franci Livingston
Naomi Perman
Esther Schak
Appreciation of Stephanie Shapiro
Miriam Seidenfeld
Birthday of Tom Rosen
Barbara Berris
JEWEL EDUCATION PROGRAM
Anita Motolinia
JAMES M. KAHNER CAMP TEKO SCHOLARSHIP FUND
Birthday of Liz Pink
Rosann Kahner
GEORGIA & IVAN KALMAN LIBRARY FUND
Appreciation of Len Kennen
Phyllis Goldhirsch
Memory of Sharon Friedman
Georgia Kalman
Memory of Helen Lutz
Georgia Kalman
Mary Lutz
Memory of Larry Marofsky
Memory of Stephen Rose
Memory of Darlene Stillpass
Georgia Kalman
RABBI JASON KLEIN DISCRETIONARY FUND
Appreciation of Rabbi Klein
Nance Alexander & Stan Eisenberg
Dana, Raul, Celia and Mateo Escobar
KNELMAN FAMILY FUND FOR INTERFAITH RELATIONS
Memory of Giancarlo Casci
Suzanne & I.P. Knelman
JUDY SALLOWAY LADIN MEMORIAL FUND
Memory of Mike Salloway
Sheri & Scott Yarosh
L'DOR VADOR CAMPAIGN
Wendy Bloom
Memory of Stephen Rose
Nancy Devitt & Richard Chase
JAMI ALANNA MARKS TIKKUN OLAM FUND
James Hallfin
January & February anniversaries, birthdays and yahrzeits, in addition to those listed below:
Anniversary of Ronna & Richard Locketz
Birthday of Elizabeth Evans
Birthday of Jeremy Marks
Birthday of Ben Premack
Birthday of Noah Silver
Memory of Mark Rosen
Jill, Jonah, Jeremy and Jesse Marks
MAYERON FAMILY FUND FOR THE PRESERVATION OF CAMP TEKO
Memory of Steve Goldstein
Cindy & Jack Mayeron
MEMORIAL PARK ENDOWMENT FUND
Memory of Alan Dorfman
Memory of Evelyn Flom
Pauline Gale
MILLER FAMILY CAMP TEKO SCHOLARSHIP FUND
Birthday of Sharlene Ladin
Marlene & Marshall Miller

JOYCE & DONALD MOSCOE ENDOWMENT FUND
Marriage of Mollie Engler & Adam Sommer
Joyce Moscoe
Marlene & Thomas Moscoe
Memory of Reta Cohen
Memory of Amy Coopersmith
Memory of Fred Nathanson
Memory of Stephen Rose
Memory of Bob Sharpe
Joyce Moscoe
Memory of Burton Weisberg
Joyce Moscoe
Marlene & Thomas Moscoe
RABBI TOBIAS DIVACK MOSS DISCRETIONARY FUND
Appreciation of Rabbi Moss
Nance Alexander & Stan Eisenberg
Judith & Jon Harris
Mitzi & Brent Magid
Laurie & Greg Swiler
Kimberly Wolson & Norman Abramson
NEW HORIZONS DONATIONS
Anniversary of Ronna & Richard Locketz
Memory of Jack Sheps
Pneena & Sheldon Sheps
ONEG & FLORAL DONATIONS
Appreciation of Liz Mack
Serene Engler & Phil Marks
Honor of Debbie Stillman
Bette Ann & Richard Bloom
Memory of Jeff Belzer
Memory of Pat Fallon
Ellyn Wolfenson & Michael Belzer
Memory of Jami Alanna Marks
Serene Engler & Phil Marks
Memory of Jane Schapiro
Karen & Fred Malver
Memory of Elizabeth Scheurer
Constance Scheurer
Memory of Darlene Stillpass
Peni & Steven Gensler
PARTICIPATION OF OTHERS
Samantha & Jonathan Chamberlin
SEGAL FAMILY FUND
Birthday of Frank Claymon
Memory of Martin Weisberg
Stefanie & Marvin Segal
CAMP TEKO ENDOWMENT FUND
Birthday of Roberta Bonoff
Dana Rubin
Honor of Camille Weinstein
Kathryn & Michael Rozin
Memory of Amy Kahn
Eric Hartmann
Memory of Fred Nathanson
Luella & Stanley Goldberg
CAMP TEKO SCHOLARSHIP FUND
Memory of Charles Sheldon Bland
Carlyn & Paul Blum
Pamela & Phillip Broat
Margaret & Richard Carlson
Phyllis & Herb Goldberg
Barbara Grashin
Myrna & Jerry Kessler
Lauren & Daniel Lieber
Karen McKay Design
Sally & Kit Narodick
Shayna & Merrill Shulman
Loreen & Perry Silverman
Kathleen & Gregory Stattine

TEMPLE ISRAEL ENDOWMENT FUND
Appreciation of Max Fallek
Appreciation of Rabbi Zimmerman
Renee Gainsley
Memory of Evelyn Flom
Lynn Steele-Gottlieb & Daniel Gottlieb
Memory of Marshall Kieffer
Rosalie & Fredric Goldberg
Memory of Maxine Smiley
Marilyn Shapiro
IRA & RENEE TISH CAMP TEKO SCHOLARSHIP FUND
Memory of Evelyn Flom
Memory of Jules Levin
Jami & Robert Tish
WIEN FAMILY SCHOLARSHIP ENDOWMENT FUND
Gisell & Rich Wien
STEPHAN LARSEN WOLF MEMORIAL MEALS ON WHEELS FUND
Sally & George Seltz
Nancy & Craig Stillman
Memory of Lorilee Sher
Anne & Allen Wolf
Recovery of Anne Wolf
Carole & Martin Kaplan
Sheila & Stephen Lieberman
YOUTH PROGRAMS ENDOWMENT FUND
Diane & Duane Tangeman
Marcia, Mara and Alan Schulman
RABBI MARCIA A. ZIMMERMAN DISCRETIONARY FUND
Anniversary of Ilene & Charles Stein
Reida Levinsohn
Appreciation of Rabbi Zimmerman
Nance Alexander & Stan Eisenberg
Rhonda, Laura, Jeffrey and Karen Bland
Adele & Curt Brown and family
Andrea & Bruce Candlin
Harvey Flom and Family
The Jaffee Family
Leslie Galvan and family
Mimi Gleekel
Robert Hunegs
Jane & Robert Ketroser
Mary Jeanne Levitt and family
Family of Larry Marofsky
John Mast
Diane & Alan Miller
Sandra & Daniel Moss
Ellen Perl & Franklin Noel
Marc Pritzker
Linda & Joe Romeo and family
Sarah Rose
Caryn & Charles Rosenberg and family
Shelley Segal
Miriam Seidenfeld
Rhonda Stein & Stuart Goldenberg
Suzanne Nathanson & Family
Emery Sher and family
Westminster Presbyterian Church
Mindy Wexler
Memory of Evelyn Flom
Susan & Robert Lewis
Memory of Joyce Newman
Joyce, Jon and Ben Branfman
Memory of Stephen Rose
Memory of Maxine Smiley
Susan & Robert Lewis

Giving Thanks and Giving Back

Thank you for your support this Thanksgiving, as we celebrated Anne & Allen Wolf's 27 years of sponsoring Meals on Wheels in memory of their son Stephan Larsen Wolf. This year, we made 88 deliveries of 397 meals. In addition to making and delivering meals, volunteers also assembled nearly 50 backpacks, containing essentials like clothing and toiletries, for people at the southern border who are seeking a life in the U.S. We are grateful for all who joined us in giving to others on this holiday of thanks.



TEMPLE ISRAEL
MINNEAPOLIS

2323 Fremont Avenue South
Minneapolis, MN 55405-2695

CHANGE SERVICE REQUESTED

NON-PROFIT
ORGANIZATION
U.S. POSTAGE
PAID
Twin Cities, MN
Permit #807