

# HAKOL

# הקול

THE VOICE OF TEMPLE ISRAEL MINNEAPOLIS



## LOOKING TO THE **FUTURE**

**JULY - AUGUST 2018**  
Tammuz - Av - Elul 5778



TEMPLE ISRAEL  
MINNEAPOLIS

# CLERGY VOICE

A PUBLICATION OF TEMPLE ISRAEL  
2323 Fremont Avenue South  
Minneapolis, MN 55405-2695  
612-377-8680  
e-mail: hakoI@templeisrael.com  
www.templeisrael.com

AFFILIATED WITH THE  
UNION FOR REFORM JUDAISM

## Rabbis

**Marcia A. Zimmerman**  
*Alvin & June Perlman Senior Rabbinic Chair*  
**Sim Glaser**  
**Jennifer S. G. Hartman**

## Cantors

**Barry Abelson**  
**Tamar Havilio**

**Director of Lifelong Learning**  
**Rabbi Jason Klein**

## COO/CFO

**Anne Rasmussen**

## BOARD OF DIRECTORS

**President**  
**Tom Hoffman**

## Vice Presidents

**Jed Stillman**  
**Michael Gelfman**

## Treasurer

**Shani Graber**

## Immediate Past President

**Roberta Bonoff**

## Beth Birke

**Cassie Benowitz**

## Paul Gendler

**Jerrold Gershon**

## Jim Jacobson

**Robert Ketrosier**

**Jessica Kingston**

**Christopher Michaelson**

**Naomi Pesky**

**Melissa Rappaport Schiffman**

**Robin Schribman**

**Pamela Ross Weinstein**

Dear Friends,

There is nothing better than summer in Minneapolis. The city returns to life as folks come out of hibernation and take to the outdoors for running, walking, biking, swimming, eating outside, and attending our many festivals. It almost makes you forget the endless roadwork. Almost.

As the days grow longer and we thaw out in the warmth of the sun, we feel rejuvenated and positive about the coming days filled with rejoicing and the blessings of community. Your clergy and staff here at Temple are having similar experiences. We are excited to have completed -

with your valuable input - a ten-year Strategic Plan for Temple Israel! We listened to you, and heard your important suggestions as to how we might improve Temple Israel in the 21<sup>st</sup> century. This is your congregation, and we strive to make sure that it is working for you. While it is our hope that you will read the entire Strategic Plan (included in this HaKol), we would like to call your attention to a few highlights:

We are excited for the arrivals of both our new Director of Lifelong Learning, Rabbi Jason Klein, and our interim Hazzan Sheni (second cantor), Cantor Tamar Havilio. We are very confident you will delight in Rabbi Klein's creativity, knowledge, and expertise in Jewish learning for all ages. Cantor Havilio is taking a sabbatical year from her position as head of Cantorial Studies at Hebrew Union College in Jerusalem. She will share with us all the wisdom and talent she is imparting on the next generation of Jewish clergy.

We listened to your feedback that some of our modes of communication are outdated. We are committed to ensuring that the programs you want are happening when you want them and how you want them - and that you know about them! With this in mind, we are developing a new and more efficient method of communicating with you called *Temple Connect*. We know everybody's inboxes are too full these days, and this tool will help to ensure you only receive the information you need in the manner you wish to receive it.

Knowing how busy life is for families, we have extended the hours of our ECC to 6:00 p.m. in hopes that this would better serve a congregational community with changing lifestyles. We are thrilled that the aftercare program, as well as the rest of the ECC, filled in just 48 hours. The future is noisy, happy, colorful, and secure!

We are excited about all the innovation that lies ahead, and it is our hope that you join in our enthusiasm. Judaism is thousands of years old, but the beauty of Reform is the way we make it work in 2018 and beyond! We look forward to learning and growing with you as we embark on these new and exciting endeavors!

Here's to a wonderful summer in the land of lakes and many *simchas* to come!

B'virkat Shalom—With Blessings of Peace,

*Rabbi Marcia A. Zimmerman*

Rabbi Marcia A. Zimmerman  
*Alvin & June Perlman Senior Rabbinic Chair*

*Rabbi Sim Glaser*

Rabbi Sim Glaser

*Rabbi Jennifer S. G. Hartman*

Rabbi Jennifer S. G. Hartman

*Cantor Barry Abelson*

Cantor Barry Abelson



OUR TEMPLE CLERGY



## INSIDE:

Clergy Voice .....	2
Worship Services .....	3
What's Happening .....	4-5
B'nai Mitzvah .....	6-7
Strategic Plan .....	8-13
Coffee with the Rabbi .....	14
Celebrating Temple Staff .....	14
High Holy Days .....	15
VOICES Benefit .....	16
Legacy Circle .....	17
Youth and Education .....	18
My Temple Story .....	19
Sharing Our Lives .....	20-21
Contributions .....	21-23



# WORSHIP SERVICES

## Friday, July 6

6:00 p.m. Erev Shabbat Service

## Saturday, July 7

9:00 a.m. Congregational Shabbat Morning Service with Torah Study  
Join Rabbi Glaser for the morning service including a discussion of the Torah portion: Pinchas, Numbers 25:10-30:1

## Friday, July 13

6:00 p.m. Shorashim Shabbat Service

## Saturday, July 14

9:00 a.m. Torah Study with Rabbi Zimmerman: Matot - Mas-ei, Numbers 30:2-36:13  
10:30 a.m. Congregational Shabbat Morning Service including the Bat Mitzvah ceremony of Eliana Schifman followed by a Kiddush luncheon

## Friday, July 20

6:00 p.m. Nefesh Shabbat Service

## Saturday, July 21

9:00 a.m. Torah Study with guest teacher Rabbi Alan Shavit-Lonstein: D'varim, Deuteronomy 1:1-3:22  
10:30 a.m. Congregational Shabbat Morning Service including the Bat Mitzvah ceremony of Avery Launer followed by a Kiddush luncheon

*Tishah B'Av begins at sundown on Saturday, July 21 and continues through Sunday, July 22*

## Friday, July 27

5:30 p.m. Camp TEKO Shabbat Picnic & Service  
[645 Tonkawa Road, Long Lake, MN 55356](#)  
6:00 p.m. Lay-led Chapel Shabbat Service at Temple

## Saturday, July 28

9:00 a.m. Torah Study with Rabbi Hartman: Va-et'chanan, Deuteronomy 3:23-7:11  
10:30 a.m. Congregational Shabbat Morning Service including the Bar Mitzvah ceremony of Charles Frank followed by a Kiddush luncheon

## Friday, August 3

6:00 p.m. Erev Shabbat Service

## Saturday, August 4

9:00 a.m. Congregational Shabbat Morning Service with Torah Study  
Join Rabbi Zimmerman and Cantor Abelson for the morning service including a discussion of the Torah portion: Eikev, Deuteronomy 7:12-11:25

## Friday, August 10

6:00 p.m. Shorashim Shabbat Service

## Saturday, August 11

9:00 a.m. Torah Study with Rabbi Zimmerman: R'eih, Deuteronomy 11:26-16:17  
10:30 a.m. Congregational Shabbat Morning Service including the Bar Mitzvah ceremony of Gus Hyman followed by a Kiddush luncheon

## Friday, August 17

6:00 p.m. Nefesh Shabbat Service  
Views from the Pews: Jean Quam will speak on *The Power of Relationship*

## Saturday, August 18

9:00 a.m. Torah Study with Rabbi Hartman: Shof'tim, Deuteronomy 16:18-21:9  
10:30 a.m. Congregational Shabbat Morning Service including the B'nai Mitzvah ceremony of Milo Sigelman and Jordyn Stenzler followed by a Kiddush luncheon

## Friday, August 24

6:00 p.m. Erev Shabbat Service  
Views from the Pews: RM Pellant will present *Citizen Soldier: Experiences of an Army Combat Veteran*

## Saturday, August 25

9:00 a.m. Torah Study with Rabbi Zimmerman: Ki Teitzei, Deuteronomy 21:10-25:19  
10:30 a.m. Congregational Shabbat Morning Service including the Bat Mitzvah ceremony of Josie LaMere followed by a Kiddush luncheon

## Friday, August 31

6:00 p.m. Erev Shabbat Service  
Views from the Pews: Christopher Michaelson will speak on *Work and the Good Life*

## Saturday, September 1

9:00 a.m. Torah Study with Rabbi Hartman: Ki Tavo, Deuteronomy 26:1-29:8  
10:30 a.m. Congregational Shabbat Morning Service including the Bar Mitzvah ceremony of Benjamin Fox followed by a Kiddush luncheon

# WHAT'S HAPPENING

---

## Torah Study

**Every Saturday, 9:00 – 10:15 a.m.**

Free and open to all. Come when you can!

Join in an instructive and spirited discussion of the week's Torah portion led by our rabbis and guest teachers. Gain a better understanding of Torah and its relevance to contemporary life through study and dialogue in community.

## Get Involved—Join our Usher Corps

Ushers help make Temple Israel a warm, welcoming, and inviting place by being hospitable and providing friendly greetings to worshippers for Shabbat, High Holy Day services, and to guests at special events throughout the year. If you are interested, we'd love to have you join our team! Please contact Jim Gurovitsch at jamesguro@aol.com or Dean Goldberg at dgoldberg620@gmail.com to learn more.

## Volunteer for Temple Israel's Homeless Shelter

**Sunday, July 1 – Sunday, July 15**

Temple Israel will host families through our partnership with Families Moving Forward (FMF) this July. We need help setting up the bedrooms, cooking and serving food, and playing with and entertaining the children; in addition, we need one man and one woman to stay overnight at Temple and see our guests off in the morning. For more information or to volunteer, please contact Marcy Frost at mfrost@marcyfrostlaw.com or 612-382-7966.

## Tishah B'Av

**Tishah B'Av begins at sundown on Saturday, July 21 and continues through Sunday, July 22**

Tishah B'Av, observed on the 9th day (tishah) of the Hebrew month of Av, is a day of mourning the destruction of both ancient Temples in Jerusalem. Though historians dispute the fact that both Temples were destroyed on this day, Tishah B'Av has become a symbol of Jewish suffering and loss. Today, Tishah B'Av stands as a day to reflect on the suffering that still occurs in our world. Traditionally, Tishah B'Av is a time set aside for fasting and mourning. The fast extends from sundown until the following sundown. In some synagogues, the Book of Lamentations is chanted, as are sections of the books of Jeremiah and Job, as well as passages from the Bible and the Talmud that deal with the Temples' destruction in 586 B.C.E. and 70 C.E.

## Kabbalah Sparks with Rabbi Glaser

**Tuesday, July 24, 7:00 p.m.**

Come join Rabbi Sim Glaser for a continuing study of the basic tenets and themes of the Kabbalah. For more information, contact Wendy at wendy@templeisrael.com or 612-374-0344.

SUMMERTIME JEWISH LEARNING ACROSS THE TWIN CITIES

## Who Inspires You?

### Eight Rabbis and a Cantor Respond

### Those Who Are Their Art—Rabbi Sim Glaser

**Wednesday, July 25, 3:30 p.m.**

Temple Israel, 2323 Fremont Avenue South, Minneapolis

Congregational leaders inspire us daily through their teachings, acts of hesed, and social justice work. This summer, come learn who inspires and energizes them! For more information or to read about all offerings, visit [www.ttsp.org](http://www.ttsp.org) or contact sara.lynn@ttsp.org or 651-698-8807.

## Temple Israel Sisterhood Garage Sale Returns

Join us by donating your best giveaways, rolling up your sleeves to help with set up, or working the sale. All proceeds from the sale help support Temple and the wider community. Volunteers needed for drop off, set up and sales days. For more information, please contact Gayle Deshong at 612-203-2422 or gmdeshong@yahoo.com, Denise Fogel at 612-889-1669 or dfogel@usiwireless.com, Leslie Held at 952-920-5376, or Karen Jaffee at 952-913-8434 or karjaff@gmail.com.

### Donation Drop-off Dates

Thursday, July 26, 8:00 a.m. – 8:00 p.m.

Friday, July 27, 8:00 a.m. – 3:00 p.m.

Sunday, July 29, 8:00 a.m. – 12:00 noon

Acceptable donations include **clothing** (clean, new or gently used on wire hangers; women's, men's, children's); **accessories** (jewelry, hats, shoes, belts, purses, scarves, ties); **household goods** (dishes, small appliances, linens, luggage, books, games, records, DVDs, crafts); and **collectibles** (Judaica, art, china, crystal, sterling silver).

### Sale Dates

Sunday, August 5, 9:00 a.m. – 5:00 p.m.

(\$5 admission 9:00 a.m. – 1:00 p.m.)

Monday, August 6, 4:00 – 8:00 p.m.

Tuesday, August 7, 4:00 – 8:00 p.m.

(Bag Day \$5 & \$10 Bags; 50% off designer & collectibles)

# WHAT'S HAPPENING

## Shabbat Service and Picnic at Camp TEKO

Friday, June 29 & Friday, July 27

5:30 p.m. Barbeque Picnic, Shabbat Service Follows

645 Tonkawa Road, Long Lake, MN 55356

A long tradition at camp, all are welcome to the Men's Club-sponsored barbeque and Sisterhood-sponsored dessert followed by our Erev Shabbat service. Enjoy a summer afternoon overlooking Lake Minnetonka with our clergy! See back cover for more information.

## Elul Reflections E-List

August 12 - September 9, 2018

Receive a brief daily email reflection from Jewish sources for each day of Elul, the month preceding Rosh HaShanah. Elul is traditionally a time of repentance and self-examination. E-mail [e-learning@templeisrael.com](mailto:e-learning@templeisrael.com) to subscribe. If you have subscribed to e-learning in the past you will continue to receive Elul and Omer daily reflections.

## 70s+ PROGRAMS FOR JULY AND AUGUST

These are special gatherings for our congregants age 70+. Light refreshments are provided. For those who do not drive, transportation will be provided. RSVP to Wendy Schwartz at 612-374-0344 or [wendy@templeisrael.com](mailto:wendy@templeisrael.com).

## Summer Days, Summer Nights With Rabbi Jason Klein

Tuesday, July 17, 1:30 - 3:00 p.m.

Since the Torah's story of creation, the sun, the moon, and the stars have represented a special place in the Jewish understanding of the world. Join together to explore some texts about the celestial bodies, the changing of the months, the changing of the seasons, and how our tradition sets the stage for our place, and role, in the cosmos. Enjoy learning with Rabbi Jason Klein, our new Director of Lifelong Learning!

## The Sephardic Sounds of Elul: Jerusalem comes to Temple Israel With Cantor Tamar Havilio

Tuesday, August 21, 1:30 - 3:00 p.m.

Come and learn with our Hazzan Sheni Cantor Tamar Havilio as she teaches about the sounds of the streets of Jerusalem in the month of Elul as we prepare for the High Holy Days!

## FALL CLASSES AT TEMPLE ISRAEL

For more information or to sign up, contact Wendy Schwartz at 612-374-0344 or [wendy@templeisrael.com](mailto:wendy@templeisrael.com).

### Introduction to Judaism

Tuesday evenings, October - May

Instructors: Rabbis Marcia Zimmerman, Sim Glaser, Jennifer Hartman, and Cantor Barry Abelson

Barbara Glaser, Hebrew instructor

Introduction to Judaism is for those who want to refresh their Judaic knowledge, are considering conversion to Judaism, or are interested in discovering more about the foundations of Judaism. This class covers the basic beliefs, observances, and philosophy of Jewish religion; culture and history; and introduces the Hebrew alphabet and key Hebrew vocabulary.

*An introductory meeting with one of our clergy is required prior to enrolling in this class.*

### Adult Hebrew Classes at Temple

Interested in learning Hebrew or having an adult Bar/Bat Mitzvah? If you've never had the opportunity to study Hebrew before or need a refresher, come and learn the basics of letter recognition and reading. Already know how to read Hebrew? Then join us to study vocabulary, grammar, and reading with an emphasis on prayers and understanding their meaning and place in the service. **NEW THIS YEAR:** Classes on conversational Hebrew and Israeli culture.

### Immersing in the Kabbalah:

### Back to the Basics of Jewish Mysticism

Fourth Tuesday of each month starting in October, 7:00 - 9:00 p.m.

Rabbi Sim Glaser's Kabbalah Sparks introductory course will begin again this fall. This two-year curriculum immerses the student in the mysteries and mind-bending theologies and philosophies of Jewish Mysticism. Subject areas include the eternal nature of God, the sefirot, the Zohar, Lurianic thought, the problem of evil, the origins of Kabbalah in the Bible, sexuality, Messianism, Hasidism, the Hebrew alef-bet, sin and repentance, and much more.

The class is open and free to all. No previous knowledge of Kabbalah is required since we are starting from scratch. The only requirements are that you purchase *A Kabbalah and Jewish Mysticism Reader* by Daniel Horwitz, and that you commit to the 18 classes over the two-year period.



**Eliana "Ellie" Rose Schifman**  
July 14, 2018

**Masei** Ellie is the daughter of Melissa "Lissie" Rappaport Schifman & Jim Schifman, sister of Maia, and granddaughter of Susan & Gary Rappaport and Madeline & Bob Schifman. Ellie enjoys soccer, art, skiing, and viola. Her favorite Jewish activity is finding the afikoman. She attends Blake where her favorite subjects are shop, science, and P.E. She would like to become an architect. When asked about her Bat Mitzvah, she said, **"This is important to me because I spent four years learning Hebrew and have watched all my family have their b'nai mitzvah. Now, as the youngest, it is finally my turn!"**



**Avery Pearl Launer**  
July 21, 2018

**D'varim** Avery is the daughter of Lesli Launer Hines & Michael Launer; sister of Zoe and Max; and granddaughter of Linda Hines, Paul Hines, and the late Eva & Robert Launer. Avery enjoys cheer, being with friends, going to the lake, and training her dogs. Her favorite Jewish activity is playing the dreidel with her family. She attends Valley View Middle School where her favorite subjects are language arts and math. She would like to be a pediatric psychiatrist. When asked about her Bat Mitzvah, she said, **"I look forward to celebrating my Bat Mitzvah with my family and friends."**



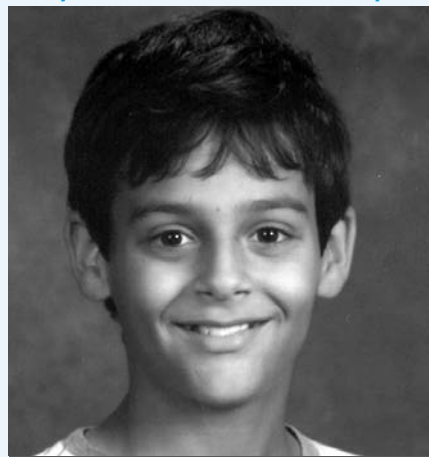
**Charles Davidson Frank**  
July 28, 2018

**Va-et'chanan** Charles is the son of Debra Blindman-Frank & Luther Frank, brother of Sophia and Beatrice, and grandson of Joanne Blindman and the late Bruce Blindman, and Ethel Van Ryswyk and the late Douglas Frank. Charley enjoys hockey, lacrosse, skiing, golf, drawing, guitar, and volunteering. One of his favorite Jewish activities is making challah. He attends XinXing at Hopkins West Jr. High where his favorite subjects are math and science. He would like to become an engineer. When asked about his Bar Mitzvah, he said, **"It means a lot to me to be able to share this special day with my family and friends."**



**Elle Adler Lubar**  
August 11, 2018

**Shof'tim** Elle is the daughter of Janice & Robert Lubar, and granddaughter of the late Charles Adler and the late Alice Adler and Alfred Lubar and the late Esther Lubar. Elle enjoys horseback riding, swimming, soccer, snow skiing, and being with friends. Her favorite Jewish activity is lighting the Chanukah menorah. She attends Valley View Middle School where her favorite subjects are math and choir. She would like to be a photographer or fashion designer. When asked about her upcoming Bat Mitzvah, she said, **"I am very excited to share this big day with my family and friends."**



**Gus Joseph Hyman**  
August 11, 2018

**R'eih** Gus is the son of Kelly & Pete Hyman, brother of Hattie and Casey, and grandson of Wendy & Wayne Salita and Sandy & Fred Hyman. Gus enjoys soccer and hockey. His favorite Jewish activity is celebrating holidays with his family. He attends Wayzata East Middle School where his favorite subjects are math and science. He would like to be a sports analyst. When asked about his upcoming Bar Mitzvah, he said, **"I'm excited about becoming a Jewish adult."**



**Milo Sanford Sigelman**

August 18, 2018

**Shof'tim** Milo is the son of Megan & Samuel Sigelman, brother of Ari, and grandson of Christine & Ted Huston and Judy & Michael Sigelman. Milo enjoys baseball, basketball, traveling, and volunteering at Feed My Starving Children. His favorite Jewish activities are going to Camp TEKO and celebrating Passover. He attends Lake Harriet Community School where his favorite subjects are math, science, and band. He would like to be a sports announcer. When asked about his Bar Mitzvah, he said, **"I'm excited to celebrate with friends and family and to accomplish such a big milestone. I am also happy to share this day with my friend Jordyn Stenzler."**



**Jordyn Stenzler**

August 18, 2018

**Shof'tim** Jordyn is the daughter of Angela & Benjamin Stenzler, sister of Sophia, and granddaughter of Fay & Mark Gustafson and Nicki & Yale Stenzler. Jordyn enjoys basketball, soccer, book club, and being with friends. Her favorite Jewish activity is Camp TEKO retreats. She attends Lake Harriet Community School where her favorite subjects are math and art. She would like to be a pediatric orthopedic surgeon. When asked about her Bat Mitzvah, she said, **"I'm looking forward to having all my hard work pay off and to share Hebrew with some of my friends and family. I am also happy to share this special day with my good friend Milo Sigelman."**



**Josie Margaret LaMere**

August 25, 2018

**Ki Teitzei** Josie is the daughter of Melanie & Andre LaMere, sister of Georgia, and granddaughter of Pamela Margolis and Mark Margolis and Susan & Guy LaMere. Josie enjoys competitive gymnastics, running, skiing, hanging out with friends, photography, and piano. Her favorite Jewish activity is going to OSRUI. She attends Anthony Middle School where her favorite subjects are math, gym and English. She would like to be a lawyer or an athlete. When asked about her upcoming Bat Mitzvah, she said, **"I'm very excited to celebrate my Bat Mitzvah with all my friends and family, and showing them all of my hard work."**

# WELCOME, CANTOR HAVILIO



CANTOR HAVILIO

We are excited for Hazzan Sheni Cantor Tamar Havilio to join our clergy team for the year. Cantor Havilio is taking a sabbatical from her position as Head of Cantorial Studies and Senior Cantor at Hebrew Union College, Jerusalem.

As the head of the Cantorial program, Cantor Havilio teaches and fosters the growth of future rabbis, cantors, and Jewish educators who serve congregations across the globe. She is active with the Women of the Wall movement, an organization that works for women to have equal rights at the Kotel in Jerusalem. In addition to her background as a teacher and mentor, Cantor Havilio comes to Temple with experience serving congregations in New Jersey, Utah, Milwaukee, and Toronto.

Through her 21 years of experience in congregations and academia, Cantor Havilio has honed her visionary approach to

religious texts. Upon completing cantorial studies, she studied at NYU's Tisch School of the Arts, specializing in Performance Studies, where she connected her background in theater with her teaching style. She says that, just as the playwright writes the script of a play for actors to bring it to life, "Someone else wrote these prayers, and we need to make them personal." She loves being able to help congregants connect to religious texts, "from the bimah, in the classroom, or one-on-one."

A native of Milwaukee, Cantor Havilio, her husband, and their three boys are excited to spend time in the Midwest. They "cannot wait to sing, pray, and learn together" with everyone at Temple Israel. Cantor Havilio is looking forward to her kids experiencing an American Reform Jewish community, and she is personally thrilled to be able to put into practice what she teaches.

The Temple Israel clergy look forward to learning, praying, and creating with Cantor Havilio.

# 2018-2028 STRATEGIC PLAN

For 140 years, Temple Israel has provided a sacred connection to the deep well of Judaism. Today, we understand that we are in a time of great change in the Jewish community and in the world. As always, Temple Israel remains a strong Jewish voice. To stay relevant far into the future, we will continue to be an inclusive, innovative community that is a sanctuary and spiritual home to many.

Our mission will inform all that we do. *At Temple Israel, Jewish wisdom inspires us as we navigate and improve our ever-changing world.* At Temple Israel, we understand that we live our lives between the tensions that confront us daily and this is where and when we need Jewish wisdom most. We tap the depths of Jewish wisdom and use our values to guide us in making decisions that will impact generations to come. We turn to Jewish tradition

to pray, learn, celebrate, mourn, and support one another through the cycle of life.

Temple Israel's attraction and future vision are reflected in our historic Emerson Avenue location and the highest caliber lay leadership, senior rabbi, clergy, and staff team who reach out, connect, and support our diverse community. As leaders in the city of Minneapolis, our mission and presence in the heart of the city are the impetus for interfaith dialogue and partnerships with government, business, and community for the welfare of all. It is with courage and guidance that our ambitious vision will be met and *Temple Israel will be a world leader of innovative Jewish community.* Our vision of Temple Israel for the future informs the goals and foundational requirements of the strategic plan that set us on the course to fulfill our mission.

**MISSION** At Temple Israel, Jewish wisdom inspires us as we navigate and improve our ever-changing world.

**VISION** The vision of Temple Israel is to be a world leader of innovative Jewish community.

**VALUES** The values we lead with at Temple Israel are:  
**Kedusha** - Believing, **Mah'ahsot** - Acting, and **Kehillah** - Belonging

**KEDUSHA (BELIEVING):** Our beliefs and experience of the sacred evolve through individual reflection, meaningful ritual, and shared experience with our diverse community.

**MAH'AHSOT (ACTING):** Our actions are influenced by a commitment to tzedakah, tradition, and openness to reinvention in our ongoing pursuit of justice.

**KEHILLAH (BELONGING):** Our sense of belonging is cultivated by participating in a committed, welcoming, and inclusive community that is there for each of us wherever we are on our journey and whenever we need it.



# STRATEGIC PLANNING: A TEN-YEAR OUTLOOK

In March of 2017, a Strategic Planning Task Force comprised of 22 lay leaders, community members, congregants, clergy and senior staff was convened. During the following 12 months, more than 400 participants provided input through forums, surveys, focus groups and task forces, all of which led to our new mission, vision, values statement and plan.



The process affirmed that Temple Israel has a unique capacity to provide a meaningful connection to Judaism over the course of an entire lifespan and in a variety of essential Jewish settings. Temple Israel's historic Emerson Avenue campus is a prominent Jewish presence in the heart of urban Minneapolis and serves as a center of inclusive Jewish learning at every stage of life. Having recently completed the largest capital campaign in the history of the congregation, the Emerson campus now meets contemporary needs of students and community members alike. A kitchen renovation is soon to follow. To complete the vision of reinventing Jewish education with new spaces and a new curriculum, Temple Israel has hired a Director of Lifelong Learning to remain on the leading edge.

Camp TEKO will continue to be an integral component of Temple Israel. Through a new master plan, usage will increase as an updated congregational and community camp in a nature setting and for youth leadership development. In addition, Temple Israel Memorial Park will be maintained in perpetuity as befits the memory of our loved ones, and Temple Israel will purchase another plot of land in another location in order to continue to serve our congregants' burial needs.

As a central initiative of this strategic plan, Temple Israel will adopt a new model to be able to quickly and correctly identify congregants' demographic information as well as their interests and opportunities for engagement. The *Temple Connect* model will allow Temple Israel lay leaders, clergy and staff to better serve the needs of our congregants, so all Temple members can say, "I am known, I belong, I am needed by my Temple community."

Concurrently, we must recognize that racism exists in our congregation and in our world, and face the unique challenges that Jews of color experience being part of our community. We will work to diversify our staff and congregation.

While strategic planning has served to confirm that the identity and leadership of Temple Israel remains vital and compelling, we have also confirmed that there are ways in which Temple Israel is no longer serving our congregation's needs. In this fast moving and connected age, members want us to continue trying new and innovative things in the areas of lifelong learning and worship. Congregants want us to reach out and live the value of social justice in many different areas beyond addressing homelessness and provide greater leadership and responsiveness to help us feel engaged with Judaism, each other, and Temple Israel.

The strategic plan reflects the congregation's strong desire for new and varied communication technologies, renovated facilities to match our incredible 2016 addition, and expanded capacity from a clergy team that must grow to continue meeting the diverse needs of congregants, as well as model leadership and innovation in our growing and changing Twin Cities community.

Temple Israel has evolved into a premier 21<sup>st</sup> century nonprofit organization that will become a leader in Jewish thought and practice in the next fifty years. In order to ensure our future, we must plan for and achieve continued financial viability. Therefore, we are working to create a sustainable annual funding model that will call on each of us to enable Temple to meet our pastoral, worship, educational, and community vision and needs. In addition, Temple Israel Foundation will continue to build our endowment through legacy and transformational giving so that Temple Israel is accessible to all regardless of financial ability, and that Temple Israel will be a congregation at the forefront of an evolving Judaism and vital Jewish community in perpetuity.



# STRATEGIC GOALS

1. Increase opportunities for our diverse congregants to engage with Temple Israel and one another, supported by an expanded clergy team and a new *Temple Connect* engagement model.
2. Create a cohesive approach to all facets of inclusive education, redevelop and expand whole-family learning, and implement a program and facilities master plan for Camp TEKO.
3. Embed social justice throughout Temple life and increase Temple Israel's capacity to consider and take action on social justice issues with a Jewish lens and through our values.
4. Expand forms of and venues for worship to meet congregants' spiritual needs at different moments, ages and stages of life.



# STRATEGIC GOALS AND ACTION STEPS

1. **Increase opportunities for our diverse congregants to engage with Temple Israel and one another, supported by an expanded clergy team and a new *Temple Connect* engagement model.**
  - A. Provide exceptional pastoral and life cycle support by growing Temple's clergy team to include a second cantor and at least one additional rabbi, using broad outreach and recruitment to bring the very best clergy to Temple.
  - B. Design and implement *Temple Connect*, a new engagement model to better know our evolving congregation - demographics, needs, interests, networks, communications choices.
    1. Use our data to improve how we reach, include, and care for all of our members and to support congregants' ability to self-organize events with their own communities.
    2. Assure clergy, staff and lay leaders are knowledgeable and capable to support *Temple*
      - C. *Connect* data-gathering and to respond to identified interests and needs.
      - C. Develop and implement a comprehensive diversity and inclusion initiative focused on race.
      - D. Continue to enhance accessibility for children and adults with special needs.
      - E. Conduct focused outreach and programming.
        1. Increase regular events for 70s plus and enhance our capabilities to provide for transportation needs for all Temple activities.
        2. Create new opportunities for engagement with 20s and 30s.
        3. Analyze trends in incoming and departing members and implement renewed outreach with prospective new members.
        4. Enhance onboarding with those who join the Temple community.
      - F. Assess the congregational nurse model for potential change and growth.

# STRATEGIC GOALS AND ACTION STEPS

## 2. Create a cohesive approach to all facets of inclusive education, redevelop and expand whole-family learning, and implement a program and facilities master plan for Camp TEKO.

- A. With Temple's new Director of Lifelong Learning, bring all education programs into a cohesive model with a new emphasis on intergenerational and whole-family learning.
- B. Expand the hours and programming of Temple Israel's Early Childhood Center.
- C. Implement individualized learning plans with our 9<sup>th</sup> -12<sup>th</sup> grade congregants including study options and an array of Jewish engagement activities such as TIPTY, Teaching Assistant roles, the TEKO Avodah/Machon program, and others.
- D. Re-imagine Confirmation.
- E. Continue our drive for excellence in the JEWL and TEKO programs.
- F. Integrate sustainability and its practice across all Temple Israel facilities, programming, education, planning and operations.
- G. Explore a model for large-scale signature public programming.
- H. Show our support and commitment to Israel through congregational trips and educational experiences.
- I. Travel to centers of Jewish interest.



## 3. Embed social justice throughout Temple life and increase Temple Israel's capacity to consider and take action on social justice issues, with a Jewish lens and through our values.

- A. Be a leading voice of Jewish values in the community as a whole.
- B. Update governance structures and values-based guidelines to assure the Temple Board can quickly and effectively act on Temple's roles with social justice issues.
- C. Incorporate social justice in all of our projects and programs.
- D. Utilize *Temple Connect* to help identify high-interest social justice issues and create task forces to bring recommendations for action to the Board.

## E. Continue work with Downtown Congregations to End Homelessness, Meals on Wheels, Families Moving Forward, and our 7<sup>th</sup> and 8<sup>th</sup> grade volunteering program.

1. Over the 10-year plan period, implement program assessments for improvements, possible endings, and new program ideas.



## 4. Expand forms of and venues for worship to meet congregants' spiritual needs at different moments, ages and stages of life.

- A. Continue to explore traditional and innovative rituals to create the most spiritually moving and participatory experiences.
- B. Experiment with and integrate more forms of music into worship.
- C. Offer holiday and Shabbat worship for a diverse range of congregant groups and interests.
  1. Identify an additional Friday night service experience that will engage and attract worshippers.
  2. Lift the level of engagement in the Tot Shabbat service and add a family/tot service on Saturday mornings.
  3. Enhance worship experiences for 2<sup>nd</sup> through 6<sup>th</sup> grade congregants.
  4. Expand the use of TEKO for family and adult worship experiences.
- D. Enhance audio-visual technology that augments the worship experience.



# FOUNDATIONAL REQUIREMENTS

- A.** Modernize Temple Israel’s communications so congregants receive news and interact with Temple through the media they choose, and Temple is able to deliver information quickly and efficiently.
- B.** Achieve financially sustainable operations by bringing Temple Israel’s revenues in balance with necessary operating and capital costs through increased philanthropy and endowment growth, and income from dues, rentals, grants and fees.
- C.** Continue to upgrade Temple Israel’s facilities using a sustainability lens, including Camp TEKO, a renovated Emerson campus kitchen, and greater cemetery capacity.
- D.** Ensure Temple’s governance and management are aligned to lead implementation of the strategic plan and integrate premier 21<sup>st</sup> century nonprofit practices.



# FOUNDATIONAL REQUIREMENTS AND ACTION STEPS

**A. Modernize Temple Israel’s communications so congregants receive news and interact with Temple through the media they choose and Temple is able to target information quickly and efficiently.**

1. Increase communications capacity with a combination of professional staff and an outside firm with branding and public relations expertise.
  - a. Assess the current mix of standing communications tools with an eye for consistency and streamlining channels.
  - b. Utilize *Temple Connect* to help identify the best mix for Temple’s communications technology and tools and for congregants to choose their communications preferences.
  - c. Improve and add new methods of two-way communication between congregants and staff.
2. Continually update the Temple website’s functionality, content and mobile optimization.

3. Hold “sandbox” brainstorming sessions two to three times a year with congregants who are marketing/communications professionals to share ideas, technology and tools to keep Temple communications innovative and relevant.



# FOUNDATIONAL REQUIREMENTS AND ACTION STEPS

## **B. Achieve financially sustainable operations by bringing Temple Israel's revenues in balance with necessary operating and capital costs through increased philanthropy and endowment growth as well as income from dues, rentals, grants and fees.**

1. Maintain Temple's commitment to be accessible to all without regard to ability to pay.
2. Double Annual Fund contributions in each of the first three years after launch, and then grow by 8% annually until Temple reaches \$10M in total *sustainable* annual revenues from all sources by 2028.
  - a. Employ diverse fundraising strategies, including one-on-one conversations with congregants.
3. Grow the Foundation assets with the target of Temple's annual draw reaching \$875,000 in 2028.
4. Manage Temple's operating costs and grow expenses conservatively in accordance with 10-year financial plan.
5. Leverage Temple's real estate assets to ensure adequate cash flow over the course of this plan.
6. Establish Board-designated reserves for facilities and unrestricted cash net assets beginning in 2026 to serve as a rainy day fund for operations and ongoing maintenance.
7. Launch separate fundraising campaigns for new significant expenses, including underwriting clergy positions, TEKO Master Plan, other property and facility improvements, and innovation funds.
8. Implement a Revenue-Growth Task Force to assess additional avenues for generating revenues from programs, rentals, grants, and fees; make recommendations to the staff and board.

## **C. Continue to upgrade Temple Israel's facilities using a sustainability lens, including Camp TEKO, a renovated Emerson campus kitchen, and greater cemetery capacity.**

1. Develop and implement a TEKO program and facilities master plan.
2. Upgrade the Emerson campus kitchen.
3. Add an accessible entrance to the current Temple Israel cemetery.
4. Acquire an additional location to expand long-term cemetery capacity.
5. Assess options for the current Emerson facility library space and how to make the highest and best use of Temple's library collections.
6. During the plan period, begin to examine visionary options for long-range development of the Temple block, including concepts such as senior housing.
  - a. Monitor and act on opportunities to acquire properties on and adjacent to the Temple block.

## **D. Ensure Temple's governance and management are aligned to lead implementation of the Strategic Plan and integrate premier 21<sup>st</sup> century nonprofit practices.**

1. Update Temple's governance structures and practices.
  - a. Conduct a review of the overall design and distribution of governance duties and responsibilities: Temple Board, standing committees, officers, chairpersons, and Board and Committee members; implement refinements as determined.
  - b. Create an Emergency Leadership Plan.
  - c. On an ongoing basis, convene, support and sunset task forces to address strategic initiatives and identify needs and new opportunities.
  - d. Strengthen Temple's capacity to identify and nurture emerging leaders with a revamped leadership development program.
  - e. Develop a "dashboard" and corresponding milestones for the Board to monitor Temple's progress and achievements and report to the congregation.
  - f. Implement an annual Board and Committee Chair retreat to refresh understanding of duties, responsibilities, the strategic plan, and priority schedule of initiatives.
2. Continue to evolve the most effective management for Temple.
  - a. Conduct a review of the overall design of the management structure; implement refinements as determined.
  - b. Implement a new Clergy Advisory standing group to support cohesive clergy succession planning and institutional development over the coming decade.
  - c. Assess human resources policies and practices to ensure that Temple attracts diverse pools of candidates/hires and develops and retains highly effective in-house and outsourced staff.
  - d. Continue regular evaluation of security and emergency preparedness and make necessary improvements or additions as identified.
3. Implement annual priority schedules of Temple Israel's initiatives based on the strategic plan and conduct at least one strategic plan update over the 10-year period.



# COFFEE WITH THE RABBI

After a year of Strategic Planning, Temple is at an exciting moment with a new vision and mission statement to guide the congregation, as well as grow programs and activities inside and beyond the new building. Rabbi Zimmerman will share coffee and conversation with members on Wednesdays this summer.

**Wednesday, July 11 at 10:00 a.m.**

**Wednesday, August 15 at 10:00 a.m.**

If you're interested in joining, please contact Sue Rolfe at [sue@templeisrael.com](mailto:sue@templeisrael.com) or 612-374-0342.



# CELEBRATING TEMPLE STAFF

Mazel Tov to our wonderful Early Childhood Center Director Sharon Rosenberg-Scholl, winner of the 2018 MnAEYC Kate Davidson Tanner Award. This award recognizes Sharon for her outstanding work in education. Sharon was chosen for her “unwavering dedication to quality, her voice for those that need a voice, and her quiet reflection and invitation for us to join her.” We at Temple Israel feel incredibly lucky to have her teaching the next generation.



**SHARON ROSENBERG-SCHOLL  
AND WIFE TINA**



**GLEN HAUSFELD**

Mazel Tov to Glen Hausfeld on becoming a Bar Mitzvah. We are very proud of Glen's hard work and dedication to fulfill this dream. It was a privilege to celebrate with him in honor of his retirement. We are grateful that Glen and his wife Jane<sup>z1</sup> joined the Temple community in 1981 and that Glen agreed to work in our mail room. With his new-found free time, Glen is excited to continue learning and praying at Temple. Glen, we greatly appreciate your years of dedication and wish you much joy in your retirement.

# GETTING READY FOR HIGH HOLY DAYS

## Play and Pray:

### Rosh HaShanah Afternoon at TEKO

**Monday, September 10, 3:00 - 5:00 p.m.**

This year we are pleased to offer a new Rosh HaShanah family experience. Families with children in third through sixth grade are invited to join our Director of Lifelong Learning Rabbi Jason Klein and all of the clergy to play and pray at Camp TEKO. The afternoon will include a tashlich ritual by the water, a camp-style musical family service, the opportunity to learn to play shofar, new foods to taste in honor of the new year, and the chance to share hopes and dreams for the new year. We cannot wait to celebrate with you!

## High Holy Days Cards Coming This July!

New this year: your Membership Packet mailing! This includes High Holy Day materials and tickets, dues information, and Temple Israel Year-in-Review. Be on the lookout!

## High Holy Day Morning Services

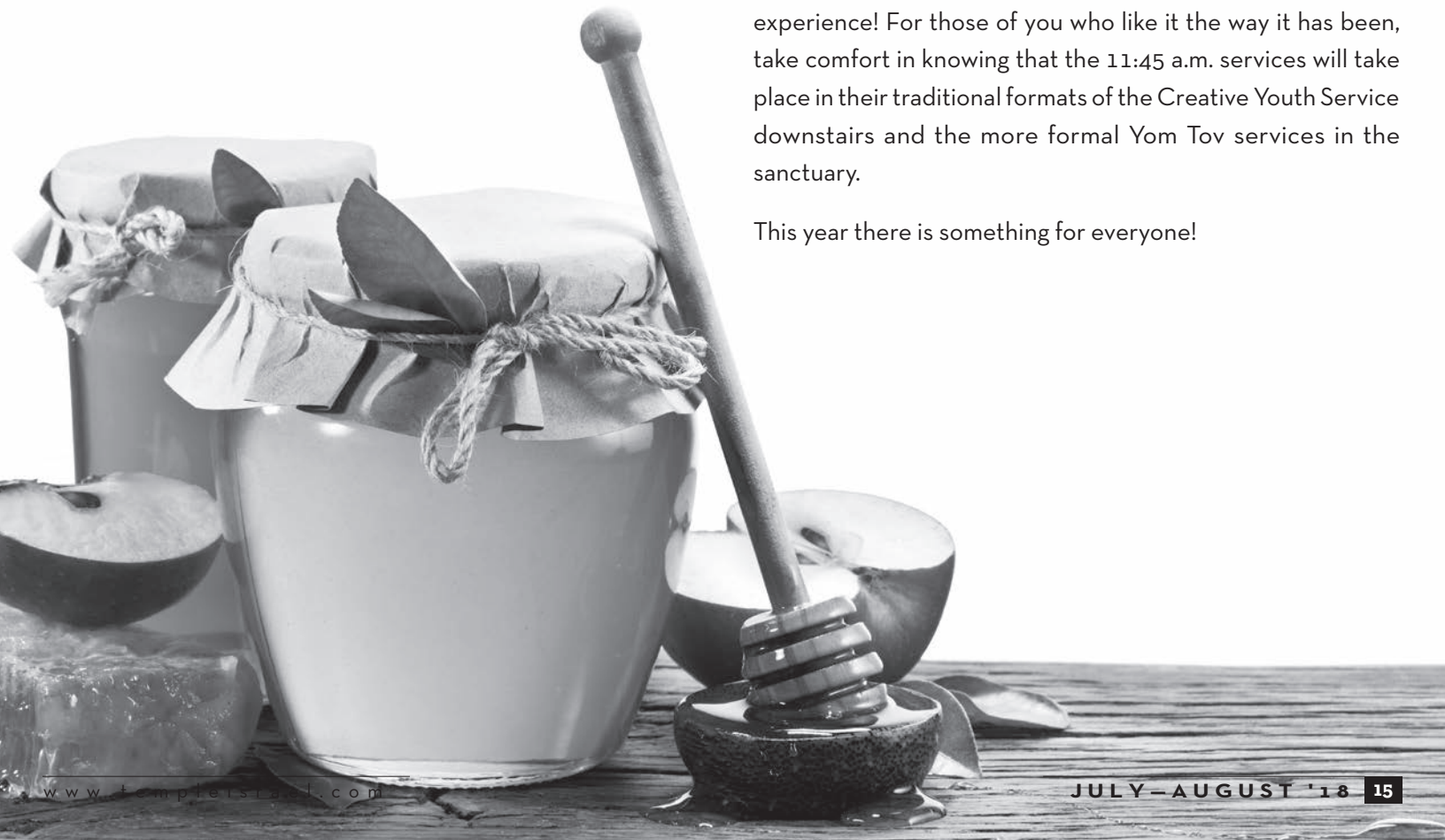
Have you ever been faced with the difficult decision of whether to attend the High Holy Day service upstairs in the sanctuary or the TIPTY youth-led service downstairs? Well, a new year brings new opportunities. . . And have we got good news for you!

The 8:15 a.m. services on both Rosh HaShanah and Yom Kippur mornings are now going to combine the best of both into one dazzling early service! Up in our beautiful sanctuary, the TIPTY teens will lead prayers along with our clergy and professional choir. This will provide a lovely mix of the sing-along folk-style music you know from the youth-led service, along with the majestic cantorial pieces that embellish our holiday rituals each year. And, of course, a rabbi will deliver the sermon!

We are excited to bring this hybrid service into the holiday rotation. Our teens have often expressed interest in presenting their unique and lively worship experience up in the “big room.” And we have heard, through the years, that many of you “upstairs folks” would like a taste of what goes on in Minda Hall. This is your year!

Consider coming and being a part of this multifaceted worship experience! For those of you who like it the way it has been, take comfort in knowing that the 11:45 a.m. services will take place in their traditional formats of the Creative Youth Service downstairs and the more formal Yom Tov services in the sanctuary.

This year there is something for everyone!





# TEMPLE ISRAEL VOICES

IDEAS OF OUR TIME

THANK YOU to our generous supporters, volunteers and guests for making the VOICES benefit on May 15 our most successful yet! It was a wonderful evening of connections and community as we welcomed David Axelrod and Ari Fleischer to a full Temple sanctuary. Your support and participation make our mission, programming, and outreach possible.

A very special thank you to our benefit co-chairs, Lynne & Andy Redleaf and Marlene Goldenberg & Bobby Patrick VI, who provided the vision and support to make this a truly special night for all.

For a list of VOICES sponsors, please see page 21.





# Temple Israel *Legacy Circle*

The Legacy Circle honors those who build for future generations by including Temple Israel in their estate plans. In recognition of their lasting commitment to Temple Israel, the Legacy Circle held its fifth annual celebration on June 14.

Because of our Legacy Circle, we can share the heart of Jewish values with all who enter our sanctuary. As our congregation continues to grow, we are inspired by our Legacy Circle members who believe in the value of imparting Jewish wisdom, building Jewish identity and championing Temple's future. Their commitment ensures a vibrant Jewish community for generations to come.

Our Legacy Circle interfaith program was generously sponsored by the Rabbi Albert G. and Frances S. Minda Leadership Development Fund of the Jewish Community Foundation at the Minneapolis Jewish Federation.

## **Your Vision, Our Jewish Future**

The Legacy Circle recognizes and honors those who have named the Temple Israel Foundation as a beneficiary of their will, retirement plan, insurance policy or other estate gift.

For your beneficiary, please use:  
Temple Israel Foundation  
2323 Fremont Avenue South,  
Minneapolis, MN 55405  
Tax ID # 41-1769841

Contact Katherine Day at 612-374-0348  
or [kday@templeisrael.com](mailto:kday@templeisrael.com).



# YOUTH AND EDUCATION DATES

June 19 - August 30	B'nai Mitzvah training will be in session: Tuesday—Western Campus (3:00 - 6:00 p.m.) Wednesday—Temple Israel (3:00 - 6:00 p.m.) Thursday—Temple Israel (10:00 - 11:00 a.m.)
July 2	Early Childhood Center Camp Haverim Session III: "Clay Explorations" begins
July 2	Camp TEKO: T-Term begins
July 4	Independence Day: No Camp Haverim, Camp TEKO, or JEWL B'nai Mitzvah Training
July 9	Early Childhood Center Camp Haverim Session IV: "Bending Body and Mind" begins

July 9	Camp TEKO: Session Bet begins
July 13 - 20	Camp TEKO: Session Bet Overnight
July 23	Early Childhood Center Camp Haverim Session V: "Let's Make a Musical" begins
July 23	Camp TEKO: Session Gimmel begins
July 27	Camp TEKO: Picnic & Shabbat Service (beginning at 5:30 p.m.)
Aug. 3 - 10	Camp TEKO: Session Gimel Overnight
Aug. 7 - 19	NFTY Summer Kallah/Kick-off

# 2018 CONFIRMATION CLASS



## **Mazel Tov to the 2018 Confirmation Class!**

*The Confirmation ceremony was observed on the Festival of Shavuot on May 20. In this ceremony, our Confirmands make a commitment to Judaism and to Jewish life. Mazel Tov to our Confirmands and their families!*

**Front row:** Haylee Davis, Isaly Swiller, Sophia Cosentino, Cantor Abelson, Abbie Skadron, Nya Alexander, Abby Kirshbaum

**Second row:** Rabbi Hartman, Jack Marker, Sarah Rothman, Nokomis Kunin, Abby Kotlarz, Sarah Jonas

**Third row:** Spencer Krelitz, Nathan Blum, Jared Bennett, Lindsay Shermeta, Alicia Glassman, Rabbi Glaser  
*Not pictured:* Peyton Lome, Carly Marschinke.

# MY TEMPLE STORY

AN ONGOING SERIES FEATURING THE PEOPLE AND PROGRAMS THAT SET TEMPLE ISRAEL APART

## Camp TEKO: LINKING TOGETHER GENERATIONS

Written on the rafters and walls of the Arrow Cabin at Camp TEKO are hundreds of signatures. This graffiti is visible evidence of the campers who, over the past 53 years, have spent summers here learning to swim, singing Hebrew songs, deepening their Jewish identity, and forging friendships.

Cathy and Richard Broms are among the many who share their camp experience with their children and grandchildren—their family has spent a total of 30 summers at TEKO. Richard particularly remembers the summer of 1965, the first summer that TEKO moved to Lake Minnetonka from Lake Nokomis where it had been since 1945. “We were called gnomes because we weren’t old enough to be counselors,” said Richard. “We had so much fun that summer refurbishing the camp.

The social side of these summers has created an everlasting link for many past and present TEKO campers. “Being in the community and having lifelong friends from those experiences is really important to all of us,” said Richard. Cathy (née Moscoe) was among his many friends at TEKO. “Through our summers at TEKO, we formed lifelong friendships. To this day, when we see [our friends], we reminisce about all the good times we had together,” said Cathy.

Richard and Cathy’s daughter Jorie Malk agrees. “Camp gave me a sense of community. Most of my school friends were not Jewish, so it was a chance to meet other Jewish youth. The

relationships that you build at camp are really strong—many of my best friends today were fellow campers.”

Jorie is one of many TEKO campers who went on to become a counselor. Today, she is a member of the Camp TEKO Master Planning Team, where she helps the traditions of camp endure. “Whether it’s shaving cream wars or learning to swim in the lake instead of a pool, our priority is to keep what we love about camp. It’s what links our generations together,” she said.

Jorie’s sons Blake and Drew are among TEKO’s newest generation of campers. “I met one of my best friends at Camp,” said Drew. “I’ve made a ton of friends there. It’s so much fun—I really love the sports, boating, and learning about Israeli culture,” added Blake.

Blake and Drew have not only added a link and a chapter to their family’s TEKO story – they’ve also added some of that traditional graffiti to camp. “In the Arrow cabin with all these signatures you try to find people you know. I found my mom’s signature and signed my name right under hers,” Drew said.



### ANNUAL FUND FOR TEMPLE ISRAEL

Providing Exceptional Experiences

This summer, 350 campers will enjoy a summer of life-shaping Camp TEKO experiences. TEKO spreads Jewish pride, Jewish identity, and Jewish joy across generations. The Annual Fund for Temple Israel helps make special experiences like this possible. For more information about the Annual Fund, contact Katherine Day at [kday@templeisrael.com](mailto:kday@templeisrael.com) or 612-374-0348.

#### Picnic and Shabbat Services at Camp TEKO

Friday, June 29 & Friday, July 27 at 5:30 p.m.

Enjoy a summer afternoon at the lake with current, future, and alumni campers! All are welcome to the picnic and Erev Shabbat service.



BROMS AND MALK FAMILY

# SHARING OUR LIVES

## Mazel Tov to...

- David Benowitz, whose restaurant Al's Place has been named the most-viewed "Hot Spot" of the past year by the *Minneapolis/St. Paul Business Journal*.
- Abigail R. Counihan, daughter of Raquel & Kevin Counihan, who received a bachelor of arts degree from Hamilton College on Sunday, May 20. Abigail graduated cum laude with a major in biology.
- Alli & Michael Hearne, on the birth of their daughter Hannah Eloise Hearne, who was born on March 5. Grandparents are Jennie & Dan Stolper and Leanne & Tom Hearne.
- Sarah Hoffman, daughter of Bonnie Dickel Hoffman & Eugene Hoffman, who was named photographer of the year by 2018 Great Plains Journalism Awards, a regional competition of eight states. Sarah, formerly a photographer for the Omaha World Herald, is now a science and environment producer for Cascade Public Media, which is home to Seattle's PBS affiliate, KCTS 9.
- Rachael Joseph on the launch of Survivors Lead, a 100% survivor-led violence prevention organization. Survivors Lead provides professional and peer support, advocacy and political training for survivors of gun, sexual, and domestic violence. Rachael is the Executive Director of the organization.
- Aaron Kashtan, who has published his first book: *Between Pen and Pixel: Comics, Materiality and the Book of the Future*. Aaron is the son of Judith & Clifford Kashtan, and is currently teaching English at the University of North Carolina - Charlotte.
- Naomi Pesky, who was named Vice President of Strategy and Stakeholder Engagement for the Metropolitan Airports Commission. Previously Naomi was Vice President, External Relations for Hennepin Theatre Trust and was Director of Marketing and Communications for the St. Paul and Minnesota Community Foundations.
- Irina Vaynerman & Pat Kallal, who welcomed their daughter Noa Jane Kallal on February 27. Noa's grandparents are Maggie & Pete Kallal and Julia & Leonard Vaynerman.

- Tefsa Wondemagegnehu, who accepted a new faculty position at St. Olaf College. He will also be serving as conductor of the One Voice Mixed Chorus, one of the largest North American LGBTQ mixed choirs, for the 2018-2019 season.
- Caroline & Ben Zack, who welcomed Elizabeth Claire Zack on May 6. Lizzie's grandparents are Kathy Simon Zack & Howard Zack.

## New Members

Jennifer Bucklew & Manuel Englander

Jessica & Lavie Golenberg

## In Memory of...

Condolences to our Temple families who have recently lost a loved one.

Robert Abbey, uncle of Devie Koval

Ann Benderoff, great aunt of Marcy Frost (Mark Ratner)

Toby Chernin, sister of Sam (Sylvia) Kaplan

Seymour Freed, father of Kenneth (Gwendolyn) Freed

Jerry Levenson, grandfather of Alissa (Stephen) Abelson

Eve Ziegler, mother of Richard Zeigler (Lisa Rogers)

## July Anniversaries

50 <sup>th</sup>	Jeanne & Steven Prawer	7/7
45 <sup>th</sup>	Janny & Alan Silver	7/8
35 <sup>th</sup>	Janice & Joel Weisberg	7/7
30 <sup>th</sup>	Nancy & Stuart Gitis	7/3
30 <sup>th</sup>	Beverly & Daniel Baker	7/17
25 <sup>th</sup>	Patti & Kean Meyer	7/4
25 <sup>th</sup>	Mary McCarthy & Brian Zelickson	7/9
25 <sup>th</sup>	Judi Lamble & Andrew Winton	7/11
20 <sup>th</sup>	Angelyn & Stephen Davis	7/11
15 <sup>th</sup>	Allison & Jacob Wert	7/26
10 <sup>th</sup>	Naomi & Mattathias Oberman	7/6
10 <sup>th</sup>	Catherine & Brett Diamond	7/12
10 <sup>th</sup>	Michelle & Noah Swerin	7/26
5 <sup>th</sup>	Katherine & Michael Docken	7/6



# CONTRIBUTIONS

## Yahrzeit Fund

Mira Akins  
Tatyana Babchinitser  
Arlene & Steve Badiner  
Susan & Andrew Baumel  
Randi & Alan Birk  
Jodi & Joseph Bohrod  
Sherrill Borkon  
Nancy Charney  
Marilyn Chiat  
Beth & Peter Choukalas  
Jeanne Corwin  
Ann & Neil Covin  
Judy Daniels  
Diane Dempsey  
James Dockman  
Mischa Dworsky  
Dora & Isaac Einisman  
Nancy Alexander & Stan Eisenberg  
Karen Neset & David Estreen  
Lil & Max Fallek  
Joan Feinberg  
Lee Feinstein  
Gerry & Sheldon Feldman  
Sherri & Larry Feuer  
Harriet Finkelstein  
Debra & Michael Finn  
Edwin Freeman  
Deena Fruchtman  
Pauline Gale  
Roni & Alan Gingold  
Nella & Mark Goldburd  
Corrine Goldsmith  
Susan & Rand Gottlieb  
Shani & Sam Graber  
Bernice & Percy Greenberg  
Myra & Roger Greenberg  
Kitty Widdes & David Haberman  
Bonnie & Bernie Hartzman  
Debbie & Marc Hasko  
Marilyn Henken  
Marilyn Horowitz  
Rhea Isaacs  
Elaine & Michael Johnson  
Jan Saffron-Johnson & Tom Johnson  
Rosann Kahner  
Janice Kalin  
Liliya Kalman  
Janet & Gene Kanofsky  
Cindy & Douglas Kanter  
Harmony & Joel Kaplan  
Jill & Lennie Kaufman  
Galina Kazhdan  
Roland King  
Renee & Hess Kline  
Suzanne & I.P. Knelman  
Deborah Kornhauser  
Susan & Hart Kuller  
Sharlene Ladin  
Barbara Levie  
Barbara & Stephen Levie  
Irina & Val Levin  
Joan Levinsohn  
Kenneth Levinson  
Lauren & Daniel Lieber  
Laurel & Scott Lifson  
Joan Reichert & Dennis MacKany  
Stan Maisel  
Karen & Frederick Malver  
Joyce Moscoe  
Charlotte Moses

Dorothy & Alan Nadosy  
Rimma Notkina  
Les Novak  
Janet & Daniel Parker  
Carol & Daniel Paulnock  
Renee & Fred Pritzker  
Ellen Prozumenshikov  
Toni Raihill  
Donna Roback  
Marilyn & Gary Rose  
Michele O'Kane & Richard Rosenberg  
Irina Turovskaya & Ilya Roytelman  
Roslyn Rubenstein  
Sally Rubenstein  
Darcy & Bobby Schnitzer  
Vicki Schrabner  
Carol Seidenfeld  
Nan Shaw  
Joye & Robert Sigelman  
Anna & Charles Silverman  
Lisa & Robert Slesinger  
Rita Spain  
Hilarie & Norman Stein  
Robert Stein  
Sharron Steinfeldt  
Christine & Leo Stern  
Greta Stryker  
Barry Swiler  
James Tankenoff  
Irina & Gennadiy Teyvel  
Rhoda Toles  
Shirley Ungar  
Mila & Alex Uspensky  
Nadya & Gennadiy Ustyev  
Esther Wattenberg  
Gail & Richard Weinberg  
Marlene Weitz  
Harriet & Arthur Wiss  
J. Pamela Weiner & James Wittenberg  
Kathy Simon Zack & Howard Zack  
Kevin Zimmerman  
Bonnie & Alan Ziskin

## Cantor Barry Abelson Discretionary Fund

*Appreciation of Cantor Abelson*  
Marian Altmowitz  
Andrea & Bruce Candlin  
Sherry Knazan  
Ellen Berkelhamer & David Samuels  
Vicki Schrabner  
Susan Seitel  
Janny & Alan Silver  
Tankenoff Families Foundation  
Doris & Jerome Webb

## Annual Fund for Temple Israel

Beth Swedberg & Caryn Fine  
Renee & James Gainsley  
Marilyn & Martin Lipschultz  
*Appreciation of Cantor Abelson*  
*Appreciation of Rabbi Hartman*  
Cindy & Brian Horgan  
*Appreciation of Nancy & Kevin Rhein*  
Nancy & Michael Schoenberger  
*Appreciation of Rabbi Zimmerman*  
Susan & Robert Lewis  
*Honor of George Laskin*  
Anna Shehigian  
*Memory of Gloria "Toby" Chernin*  
Minneapolis Jewish Federation  
*Memory of Ephraim Dworsky*

Mischa Dworsky  
*Memory of Barbara Gleeckel*  
Kathy Simon Zack & Howard Zack  
*Memory of Rose Naiman*  
Melanie & Randy Kraft  
*Memory of Betty Pinks*  
*Memory of Rose Schrabner*  
Vicki Schrabner  
*Memory of Gayle Stein*  
Bruce Amberger  
Heidi & Jeffrey Baill  
Deborah Donaldson  
Eric Goldberg  
Bonnie Halperin  
Minneapolis Jewish Federation  
Laura Pittner  
Nancy & Kevin Rhein  
Deborah & Thomas Simon  
Susan & Paul Yellin  
Kathy Simon Zack & Howard Zack

## Berezovsky Family Special Needs Fund

*Anniversary of Sandra & Julius Berezovsky*  
Diane Coplan Donohue & Michael Donohue  
*Memory of Gayle Stein*  
Jody Beck  
Linda & Steven Goldstein

## Carlie Jeanne Beugen Endowment Fund

*Recovery of Amy Schmidt*  
Sharon & Neal Fenton

## Joanne Blindman Nursery School Scholarship Fund

*Memory of Alan Bensman*  
Joanne Blindman

## Rabbi S.N. Deinar Memorial Fund

Sue & Amos Deinar

## John Dellapenna Fund to End Homelessness

Michelle Johnson & Andrew Greengrass  
*Birthday of Mary Neuman*  
*Honor of Nicolas Styles*  
Susan Tish McMorris & Brian McMorris  
*Honor of Marcy Frost & Mark Ratner*  
Gayle & David Deshong

## Education Endowment Fund

*Birthday of Audrey Halpern*  
Howard & Beverly Radin  
*Honor of Bat Mitzvah of Shelby Kaplan*  
Temple Israel Sisterhood  
*Honor of George Laskin*  
Paul Johnson

*Honor of Marcy Frost & Mark Ratner*  
Temple Israel Sisterhood  
*Memory of Richard Abrams*  
Julie Fine

*Memory of Osher Altmowitz*  
Beth & Stephen Birke  
Elizabeth & Mayer Tapper  
*Memory of Bonnie Yuvaraj*  
Kathleen Carter

## Debra Kieffer Eisenberg Fund for Children with Learning Disabilities

*Appreciation of Eileen Colman*  
*Appreciation of Toni Dachis*  
*Appreciation of Barbara Gurovitsch*  
*Appreciation of Janice Kalin*

*Appreciation of Nancy Proman*  
*Appreciation of Marna Reed*  
*Appreciation of Carol Shapiro*  
*Appreciation of Cindy Shapiro*  
*Appreciation of Terri Shapiro*  
Nancy Alexander & Stan Eisenberg  
*Memory of Bruce Abrams*  
*Memory of Gayle Stein*  
Cindy & Joel Shapiro

## Food Shelf Fund

Patricia & Samuel Bronstien  
Sandy Donaldson  
Shirley & Byron Frank  
Rachael Freed  
Bonnie & Lester Goldblatt  
Elaine & Lawrence Hallfin  
Shirley Held  
Cheryl & Gerald Kaplan  
Judith & Clifford Kashtan  
Sharlene Ladin  
Rochelle Larson  
Judith Belzer & Jeremy Waldman  
*Anniversary of Corky & Mitch Einzig*  
Rita & Larry Covin  
*Anniversary and birthdays of Caryn & Charles Rosenberg*  
Rita & Larry Covin  
Elizabeth & Mayer Tapper  
*Anniversary of Rita & Rick Stone*  
Jodi & Noah Lipschultz  
*Birthday of Jeanne Corwin*  
Rosann Kahner  
*Birthday of Audrey Halpern*  
Tudie Ross  
*Birthday of Linda Noddle*  
Rochelle & Marvin Stillman  
*Memory of Richard Abrams*  
Fern Meshbeshner  
*Memory of James William Betts IV*  
Judy Daniels  
*Memory of Judy Lebedoff*  
Bonnie & Phillip Gainsley  
*Memory of Manya Sherman*  
Kristine & Dominic Cotroneo  
*Memory of Gayle Steiner*  
Amy Lieberman  
Jane Lifson  
Debbie & Craig Spencer  
Rochelle & Marvin Stillman  
*Recovery of Sally Cohen*  
Cathy Cohen  
*Recovery of Linda Sklar*  
Rochelle & Marvin Stillman

## Randy & Mary Gilman Scholastic Aid Fund

*Memory of Randy Gilman*  
Elizabeth & Eduard Michel

## Rabbi Sim Glaser Discretionary Fund

*Appreciation of Rabbi Glaser*  
Carol Roemhild  
Ellen Berkelhamer & David Samuels  
Susan Seitel  
Steven Snyder  
*Birthday of Irwin Wiseman*  
Sharon & Michael Posnansky

**JUDY & HERB GOLDENBERG  
SCHOLARSHIP FUND**

*Memory of Judy Lebedoff  
Memory of Gayle Stein  
Herb Goldenberg*

**BILL HALPERN SOCIAL JUSTICE FUND**

*Birthday of Elie Halpern  
Memory of William Halpern  
Memory of Belle Seife  
Agie & Mike Seife*

**EDWIN F. HARRIS PRESIDENTS' FUND**

*Yahrzeit of Emma Glassberg  
Yahrzeit of Miriam Leff  
Yahrzeit of Joseph Perlman  
Yahrzeit of Clara Roberts  
Judith & Jon Harris*

**RABBI JENNIFER S.G. HARTMAN  
DISCRETIONARY FUND**

*Appreciation of Rabbi Hartman  
Judith & Louis Cosentino  
Ellen Berkelhamer & David Samuels  
Honor of Fred Hartman  
Renee & James Gainsley  
Memory of Beatrice Bahr  
Nancy & Robert Hartman*

**ROSELEE & SIDNEY HASKOVITZ  
HEALING FUND**

*Memory of Harold Haskovitz  
Memory of Sidney Haskovitz  
Memory of Milton Saliterman  
Beth & Mark Saliterman*

**GERRI HYMES MAISEL, HARVEY  
AND SCOTT HYMES  
ENDOWMENT FUND**

*Anniversary of Renee & Mel Maisel  
Memory of Bette Kotlarz  
Memory of Jill Rotman  
Stan Maisel and Jean Efron*

**GEORGIA & IVAN KALMAN  
LIBRARY FUND**

*Memory of Osher Altrowitz  
Memory of David Engelmann  
Memory of Bertha & George Smith  
Memory of Daniel Steger  
Georgia Kalman*

**MARIAN J. KAPLAN SCHOLARSHIP  
FUND IN RECOGNITION OF  
SISTERHOOD**

*Birthday of Stuart Nolan  
Joyce & David H. Abramson*

**NATHAN & GERTRUDE KAPLAN  
SCHOLARSHIP FUND**

*Memory of Rose Naiman  
Diane & Howard Kaplan*

**RALEIGH & MICHAEL KULLER -  
JERRY BRILL FUND TO ASSIST  
CONGREGANTS IN NEED**

*Judith Brill  
Memory of Betty Strem  
Ardis & Fred Blumenthal*

**JUDY SALLOWAY LADIN  
MEMORIAL FUND**

*Anniversary and birthdays of  
Caryn & Chuck Rosenberg  
Suzanne Prass  
Sheri & Scott Yarosh*

*Yahrzeit of Louis Salloway  
Sheri & Scott Yarosh*

**HAROLD LASKIN FAMILY FUND**

*Honor of Bar Mitzvah of George Laskin  
Lou Ann Bongard  
Gisela Herrera  
David Johnson  
Lisa Adams, Mark Mitson and Family  
Stephon Mitson*

**JAMI ALANNA MARKS  
TIKKUN OLAM FUND**

*June & July anniversaries, birthdays and  
yahrzeits, in addition to the events below:  
Anniversary of Cindy & Jack Mayeron  
Anniversary of Micki & Mort Naiman  
Anniversary of Naomi & Matt Oberman  
Anniversary of Lisa & Rabbi Stephen Pinsky  
Anniversary of Janny & Alan Silver  
Anniversary of Anne & Allen Wolfe  
Birthday of Rae Berman  
Birthday of Daniel Dveris  
Birthday of Raleigh Kent  
Birthday of Ruth Knelman  
Birthday of Deb Kornhauser  
Birthday of Lauria Kramer  
Birthday of Eva Moreimi  
Birthday of Stephen Silver  
Birthday of Betsy Sitkoff  
Honor of Bar Mitzvah of Glen Hausfeld  
Memory of Frank Hirschfeldt  
Yahrzeit of Jami Alanna Marks  
Yahrzeit of Sybil Robinson  
Jill, Jeremy, Jonah and Jesse Marks  
Appreciation of Jill Marks  
Cindy Levy  
Birthday of Jill Marks  
Sue Bloom  
Delinda Collins  
Mary Gulliford  
Rosemary & Mark Levine  
Rena Lindgren  
Engagement of Jeremy Marks and  
Marnie Fleming  
Joanne Blindman  
Memory of Aaron Feuer  
Mindy Isaacs  
Memory of Michael Hanek  
Barbara & Donald Hanek  
Memory of Jami Alanna Marks  
James Hallfin  
Karen Johnson  
Rena Lindgren*

**MILLER FAMILY CAMP TEKO  
SCHOLARSHIP FUND**

*Honor of graduation of Blake Brazner  
Honor of graduation of Sarah Goldenberg  
Recovery of Patti Bratter  
Recovery of Alvin Kaye  
Marlene & Marshall Miller*

**JOYCE & DONALD MOSCOE  
ENDOWMENT FUND**

*Birthday of Jeanne Corwin  
Birthday of Audrey Halpern  
Recovery of Margo Berdass  
Joyce Moscoe*

**JEANNE & STEVE PRAWER  
EDUCATION ENDOWMENT FUND**

*Anniversary of Andrea & David Ornstein  
Anniversary of Lisa & Rabbi Stephen Pinsky  
Anniversary of Rita & Rick Stone  
Jeanne & Steven Praver  
Anniversary of Jeanne & Steve Praver  
Lisa Squillace*

**NEW HORIZONS**

*Appreciation of Wendy Schwartz  
Ann & Dan Klein*

**ONEG AND FLORAL DONATIONS**

*Nancy Alexander & Stan Eisenberg  
Audray Rees  
Reine & Sam Shiffman  
Barb & Todd Striker  
Memory of Zelda Berman Fliegel  
Ellyn Wolfenson & Michael Belzer  
and Family  
Memory of Jami Alanna Marks  
Marks and Robinson Families*

**SEGAL FAMILY FUND**

*Memory of Osher Altrowitz  
Memory of Arlan Garvis  
Stefanie & Marvin Segal*

**SUSIE SIMON HEALING FUND**

*Birthday of Jim Simon  
Margo Berdass*

**TANKENOFF FAMILIES CAMP TEKO  
SCHOLARSHIP FUND**

*Tankenoff Families Foundation  
Memory of Gayle Stein  
Hindy & Scott Tankenoff  
Marsha & Gary Tankenoff*

**CAMP TEKO ENDOWMENT FUND**

*Appreciation of Cecelia & Stephen Bistner  
Roberta & Fred Kravitz  
Appreciation of Tom Hoffman  
Cindy & Jack Mayeron  
Birthday of Ann Goldstein  
Roberta & Fred Kravitz  
Memory of Richard Abrams  
Stanley & Luella Goldberg  
Judith Gottschalk  
Lauren & Daniel Lieber*

**CAMP TEKO SCHOLARSHIP FUND**

*Honor of Bar Mitzvah of Joseph Hoffman  
Elaine Steinman  
Memory of Richard Abrams  
Martha & Daniel Aronson  
Rhonda & Charles Bland*

**TEMPLE ISRAEL ENDOWMENT FUND**

*Lorraine Applebaum  
Birthday of Frank Levin  
Greta Stryker  
Honor of Bar Mitzvah of Joseph Hoffman  
Susan & Mark Jacobs  
Memory of Richard Abrams  
Marcia Levin  
Neil Naftalin  
Sharron Steinfeldt  
Memory of Marian Becker  
Sharron Steinfeldt  
Memory of Barbara Gleekel  
Judy Karon  
Sharron Steinfeldt  
Memory of Harold Magy  
Robin & Stephen Silverman*

*Memory of Marlene Mankoff*

*Joey & Jerry Laurie  
Memory of Howard Reichert  
Anna & Charles Silverman  
Memory of Gayle Stein  
Loni & Darrell Ansel  
Claudia Aronsohn  
Melanie Barry  
Beth & Stephen Birke  
Cynthia & Donald Brown  
Susan & Robert Diamond  
Mimi Gleekel and David Levy  
Cher & Scott Harris  
Arlene & Zvi Leibovich  
Vicki & Howard Londer  
Constance & Joseph Paiement  
Lynn Duffy & Larry Ronglien  
Rochelle Rubin & Scott Rutzick  
Carol Shapiro  
Toodie & Frank Trestman  
Sybil & Seymour Wilensky  
Yahrzeit of Joseph Numero  
Sharron Steinfeldt*

**TZEDAKAH FUND**

*Aviva Weisberg*

**YOUTH SCHOLARSHIP  
ENDOWMENT FUND**

*Diane & Duane Tangeman  
Memory of David Engelmann  
Anonymous  
Memory of Barbara Gleekel  
Sheri & Scott Yarosh*

**RABBI MARCIA A. ZIMMERMAN  
DISCRETIONARY FUND**

*Appreciation of Rabbi Zimmerman  
Jennifer Abrams and Family  
Cookie & Chuck Abramson and Family  
Marian Altrowitz  
Joshua Arnold  
Joyce & Alan Branfman  
Rhonda Stein & Stuart Goldenberg  
and Family  
Bruce Goldstein  
Joanna & Matt Goldstein and Family  
Sara & Dan Greenberg  
Robert Hunegs  
Julie & Barry Landy  
Marilyn & Martin Lipschultz  
Janny & Alan Silver  
Katie & Michael Stern  
Doris & Jerome Webb  
Michael Wolk  
Birthday of Lee Moral  
Carolyn Kaufmann  
Birthday of Mary Neuman  
Bonnie & Phillip Gainsley  
Aly Ketover  
Honor of Max Hornstein  
John Mast  
Memory of Dorothy Goldstein  
Carol Knutson  
Memory of Osher Altrowitz  
Sharon Perwien*

**IN-KIND GIFTS**

*Special thanks to Erica & Bob Belzer and  
JonnyPops for the treats for  
JEWEL week day learners!*



**TEMPLE ISRAEL**  
**MINNEAPOLIS**

2323 Fremont Avenue South  
Minneapolis, MN 55405-2695

CHANGE SERVICE REQUESTED

NON-PROFIT  
ORGANIZATION  
U.S. POSTAGE  
**PAID**  
Twin Cities, MN  
Permit #807

## Picnic and Shabbat Services at Camp TEKO

Friday, June 29 & Friday, July 27 at 5:30 p.m.

A long tradition at camp, all are welcome to the Men's Club-sponsored barbeque and Sisterhood-sponsored dessert followed by our Erev Shabbat service. Enjoy a summer afternoon overlooking Lake Minnetonka with our clergy!

### Parking for the Picnic

[Chapel in the Woods, 525 Leaf Street, Long Lake, MN 55356](#)

This year, parking for the TEKO picnic will be at Chapel in the Woods. We are excited for you to take the TEKO shuttle, ushered to camp by your TEKO bus captain who will lead you in song!

Staff will be on hand to guide and assist you in parking before you ride to Camp. The shuttle will run continuously beginning at 5:00 p.m. until the end of the evening.

Please note: Only handicap parking is available at Camp TEKO

